

TMC2 Rabbit Polyclonal Antibody
TMC2 Rabbit Polyclonal Antibody
Catalog # AP93306**Specification**

TMC2 Rabbit Polyclonal Antibody - Product Information

Application	WB
Primary Accession	Q8TDI7
Reactivity	Human, Mouse
Host	Polyclonal, Rabbit, IgG
Clonality	Polyclonal
Calculated MW	102610

TMC2 Rabbit Polyclonal Antibody - Additional Information**Gene ID** 117532**Other Names**

Transmembrane channel-like protein 2, Transmembrane cochlear-expressed protein 2, TMC2 (HGNC:16527), C20orf145

Storage Conditions

-20°C

TMC2 Rabbit Polyclonal Antibody - Protein Information**Name** TMC2 ([HGNC:16527](#))**Synonyms** C20orf145**Function**

Pore-forming subunit of the mechanotransducer (MET) non- selective cation channel complex located at the tips of stereocilia of cochlear hair cells and that mediates sensory transduction in the auditory system (PubMed:11850618). The MET complex is composed of two dimeric pore-forming ion-conducting transmembrane TMC (TMC1 or TMC2) subunits, and aided by several auxiliary proteins including LHFPL5, TMIE, CIB2/3 and TOMT, and the tip-link PCDH15. MET channel is activated by tension in the tip-link extending from the side wall of one stereocilium to the tip of the adjacent shorter stereocilium, where the channel is located (By similarity). TMC2 MET channel is highly permeable to calcium and likely transports monovalent cations. Also involved in vestibular hair cell transduction current of the mammalian inner ear (By similarity).

Cellular Location

Cell membrane {ECO:0000250|UniProtKB:E7FFT2}; Multi-pass membrane protein. Note=Localized to the stereocilia tips of the cochlear hair cells and plasma membranes of cuticular plates. {ECO:0000250|UniProtKB:Q8R4P4}

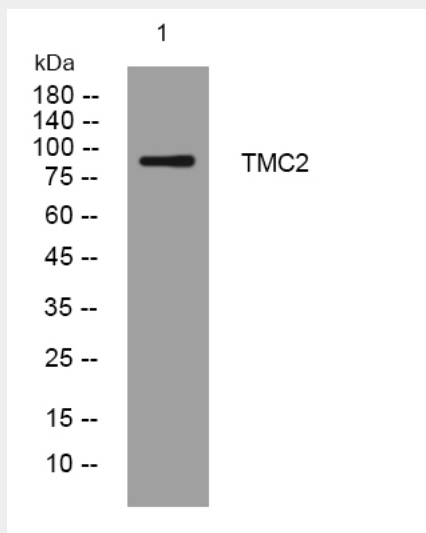
Tissue Location

Detected in fetal cochlea.

TMC2 Rabbit Polyclonal Antibody - Protocols

Provided below are standard protocols that you may find useful for product applications.

- [Western Blot](#)
- [Blocking Peptides](#)
- [Dot Blot](#)
- [Immunohistochemistry](#)
- [Immunofluorescence](#)
- [Immunoprecipitation](#)
- [Flow Cytometry](#)
- [Cell Culture](#)

TMC2 Rabbit Polyclonal Antibody - Images

Western blot analysis of lysates from A431 cells, primary antibody was diluted at 1:1000, 4° over night

TMC2 Rabbit Polyclonal Antibody - Background

This gene encodes a transmembrane protein that is necessary for mechanotransduction in cochlear hair cells of the inner ear. Mutations in this gene may underlie hereditary disorders of balance and hearing. [provided by RefSeq, Aug 2015],