

**SPR2D Rabbit Polyclonal Antibody**  
**SPR2D Rabbit Polyclonal Antibody**  
**Catalog # AP93316****Specification**

---

**SPR2D Rabbit Polyclonal Antibody - Product Information**

Application	IHC, IF
Primary Accession	<a href="#">P22532</a>
Reactivity	Human, Mouse
Host	Polyclonal, Rabbit, IgG
Clonality	Polyclonal
Calculated MW	7905

**SPR2D Rabbit Polyclonal Antibody - Additional Information****Gene ID** 6703**Other Names**

Small proline-rich protein 2D, SPR-2D, Small proline-rich protein II, SPR-II, SPRR2D

**Storage Conditions**

-20°C

**SPR2D Rabbit Polyclonal Antibody - Protein Information****Name** SPRR2D**Function**

Cross-linked envelope protein of keratinocytes. It is a keratinocyte protein that first appears in the cell cytosol, but ultimately becomes cross-linked to membrane proteins by transglutaminase. All that results in the formation of an insoluble envelope beneath the plasma membrane.

**Cellular Location**

Cytoplasm.

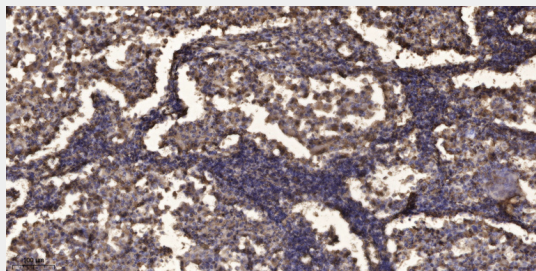
**SPR2D Rabbit Polyclonal Antibody - Protocols**

Provided below are standard protocols that you may find useful for product applications.

- [Western Blot](#)
- [Blocking Peptides](#)
- [Dot Blot](#)
- [Immunohistochemistry](#)
- [Immunofluorescence](#)
- [Immunoprecipitation](#)
- [Flow Cytometry](#)

- [Cell Culture](#)

### **SPR2D Rabbit Polyclonal Antibody - Images**



Immunohistochemical analysis of paraffin-embedded human Squamous cell carcinoma of lung. 1, Antibody was diluted at 1:200(4° overnight). 2, Tris-EDTA,pH9.0 was used for antigen retrieval. 3,Secondary antibody was diluted at 1:200(room temperature, 45min).