

FAM9C Rabbit Polyclonal Antibody
FAM9C Rabbit Polyclonal Antibody
Catalog # AP93320**Specification**

FAM9C Rabbit Polyclonal Antibody - Product Information

Application	WB
Primary Accession	Q8IZT9
Reactivity	Rat, Human
Host	Polyclonal, Rabbit, IgG
Clonality	Polyclonal
Calculated MW	19210

FAM9C Rabbit Polyclonal Antibody - Additional Information**Gene ID** 171484**Other Names**

Protein FAM9C, FAM9C (HGNC:18405)

Dilution

WB~~1:1000

Storage Conditions

-20°C

FAM9C Rabbit Polyclonal Antibody - Protein Information**Name** FAM9C ([HGNC:18405](#))**Cellular Location**

Nucleus.

Tissue Location

Expressed exclusively in testis.

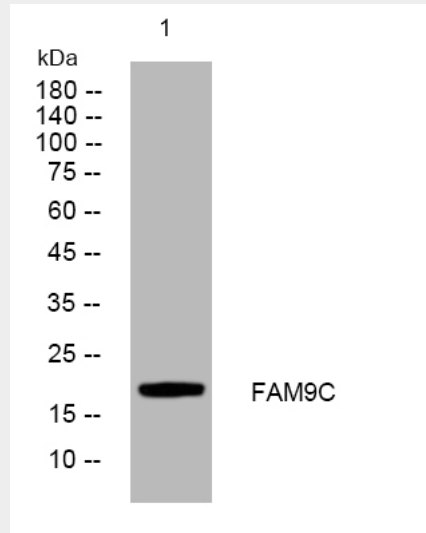
FAM9C Rabbit Polyclonal Antibody - Protocols

Provided below are standard protocols that you may find useful for product applications.

- [Western Blot](#)
- [Blocking Peptides](#)
- [Dot Blot](#)
- [Immunohistochemistry](#)

- [Immunofluorescence](#)
- [Immunoprecipitation](#)
- [Flow Cytometry](#)
- [Cell Culture](#)

FAM9C Rabbit Polyclonal Antibody - Images



Western blot analysis of lysates from 3T3 cells, primary antibody was diluted at 1:1000, 4° over night

FAM9C Rabbit Polyclonal Antibody - Background

This gene is a member of a gene family which arose through duplication on the X chromosome. The encoded protein may be localized to the nucleus as the protein contains several nuclear localization signals, and has similarity to a synaptonemal complex protein. [provided by RefSeq, Aug 2011],