

WASH6 Rabbit Polyclonal Antibody
WASH6 Rabbit Polyclonal Antibody
Catalog # AP93344**Specification**

WASH6 Rabbit Polyclonal Antibody - Product Information

Application	WB
Primary Accession	O9NQA3
Reactivity	Rat, Human
Host	Polyclonal, Rabbit, IgG
Clonality	Polyclonal
Calculated MW	47990

WASH6 Rabbit Polyclonal Antibody - Additional Information**Other Names**

WAS protein family homolog 6, Protein FAM39A, WASH6P, CXYorf1, FAM39A

Storage Conditions

-20°C

WASH6 Rabbit Polyclonal Antibody - Protein Information

Name WASH6P

Synonyms CXYorf1, FAM39A

Function

May act as a nucleation-promoting factor at the surface of endosomes, where it recruits and activates the Arp2/3 complex to induce actin polymerization, playing a key role in the fission of tubules that serve as transport intermediates during endosome sorting.

Cellular Location

Early endosome membrane {ECO:0000250|UniProtKB:A8K0Z3}. Recycling endosome membrane {ECO:0000250|UniProtKB:Q8VDD8}. Note=Localization to the endosome membrane is mediated via its interaction with WASHC2 {ECO:0000250|UniProtKB:A8K0Z3}

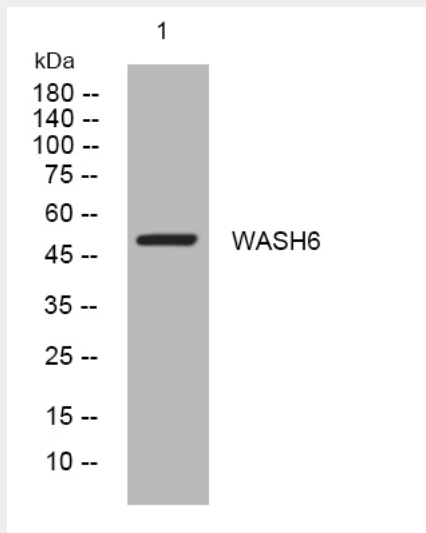
WASH6 Rabbit Polyclonal Antibody - Protocols

Provided below are standard protocols that you may find useful for product applications.

- [Western Blot](#)
- [Blocking Peptides](#)
- [Dot Blot](#)
- [Immunohistochemistry](#)
- [Immunofluorescence](#)

- [Immunoprecipitation](#)
- [Flow Cytometry](#)
- [Cell Culture](#)

WASH6 Rabbit Polyclonal Antibody - Images



Western blot analysis of lysates from Hela cells, primary antibody was diluted at 1:1000, 4° over night