

DB123 Rabbit Polyclonal Antibody
DB123 Rabbit Polyclonal Antibody
Catalog # AP93348**Specification**

DB123 Rabbit Polyclonal Antibody - Product Information

Application	IHC, IF
Primary Accession	Q8N688
Reactivity	Rat, Human
Host	Polyclonal, Rabbit, IgG
Clonality	Polyclonal
Calculated MW	8105

DB123 Rabbit Polyclonal Antibody - Additional Information**Gene ID** 245936**Other Names**

Beta-defensin 123, Beta-defensin 23, DEFB-23, Defensin, beta 123, DEFB123, DEFB23

Dilution

IHC~~1:100~500

IF~~1:50~200

Storage Conditions

-20°C

DB123 Rabbit Polyclonal Antibody - Protein Information**Name** DEFB123**Synonyms** DEFB23**Function**

Has antibacterial activity.

Cellular Location

Secreted.

Tissue Location

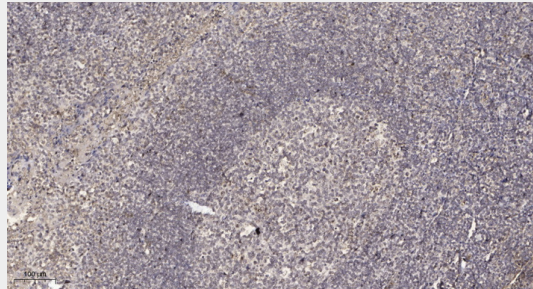
Abundant expression in the male reproductive tract only. Abundant expressed in testis and the caput region of epididymis, but low in the corpus region.

DB123 Rabbit Polyclonal Antibody - Protocols

Provided below are standard protocols that you may find useful for product applications.

- [Western Blot](#)
- [Blocking Peptides](#)
- [Dot Blot](#)
- [Immunohistochemistry](#)
- [Immunofluorescence](#)
- [Immunoprecipitation](#)
- [Flow Cytometry](#)
- [Cell Culture](#)

DB123 Rabbit Polyclonal Antibody - Images



Immunohistochemical analysis of paraffin-embedded human tonsil. 1, Antibody was diluted at 1:200(4° overnight). 2, Tris-EDTA,pH9.0 was used for antigen retrieval. 3,Secondary antibody was diluted at 1:200(room temperature, 30min).

DB123 Rabbit Polyclonal Antibody - Background

Defensins are cysteine-rich cationic polypeptides that are important in the host immunologic response to invading microorganisms. This antimicrobial protein is secreted and is a member of the beta defensin protein family. Beta defensin genes are found in several clusters throughout the genome, with this gene mapping to a cluster at 20q11.1. Two transcript variants, one protein-coding and the other not, have been found for this gene. [provided by RefSeq, Nov 2014],