

COX16 Rabbit Polyclonal Antibody
COX16 Rabbit Polyclonal Antibody
Catalog # AP93363

Specification

COX16 Rabbit Polyclonal Antibody - Product Information

Application	IHC, IF
Primary Accession	O9P0S2
Reactivity	Human, Mouse
Host	Polyclonal, Rabbit, IgG
Clonality	Polyclonal
Calculated MW	12293

COX16 Rabbit Polyclonal Antibody - Additional Information

Gene ID 51241

Other Names

Cytochrome c oxidase assembly protein COX16 homolog, mitochondrial, hCOX16, COX16

Dilution

IHC~~1:100~500

IF~~1:50~200

Storage Conditions

-20°C

COX16 Rabbit Polyclonal Antibody - Protein Information

Name COX16

Function

Required for the assembly of the mitochondrial respiratory chain complex IV (CIV), also known as cytochrome c oxidase (PubMed: [29355485](http://www.uniprot.org/citations/29355485), PubMed: [29381136](http://www.uniprot.org/citations/29381136), PubMed: [33169484](http://www.uniprot.org/citations/33169484)). Promotes the insertion of copper into the active site of cytochrome c oxidase subunit II (MT-CO2/COX2) (PubMed: [29355485](http://www.uniprot.org/citations/29355485), PubMed: [29381136](http://www.uniprot.org/citations/29381136)). Interacts specifically with newly synthesized MT-CO2/COX and its copper center-forming metallochaperones SCO1, SCO2 and COA6 (PubMed: [29381136](http://www.uniprot.org/citations/29381136)). Probably facilitates MT-CO2/COX2 association with the MITRAC assembly intermediate containing MT-CO1/COX1, thereby participating in merging the MT-CO1/COX1 and MT-CO2/COX2 assembly lines (PubMed: [29381136](http://www.uniprot.org/citations/29381136)).

Cellular Location

Mitochondrion inner membrane; Single-pass membrane protein

Tissue Location

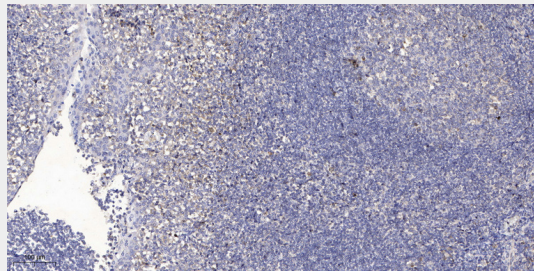
Widely expressed. Expressed at higher level in skeletal muscle, heart and liver.

COX16 Rabbit Polyclonal Antibody - Protocols

Provided below are standard protocols that you may find useful for product applications.

- [Western Blot](#)
- [Blocking Peptides](#)
- [Dot Blot](#)
- [Immunohistochemistry](#)
- [Immunofluorescence](#)
- [Immunoprecipitation](#)
- [Flow Cytometry](#)
- [Cell Culture](#)

COX16 Rabbit Polyclonal Antibody - Images



Immunohistochemical analysis of paraffin-embedded human tonsil. 1, Antibody was diluted at 1:200(4° overnight). 2, Tris-EDTA,pH9.0 was used for antigen retrieval. 3,Secondary antibody was diluted at 1:200(room temperature, 30min).