

RM12 Rabbit Polyclonal Antibody
RM12 Rabbit Polyclonal Antibody
Catalog # AP93370**Specification**

RM12 Rabbit Polyclonal Antibody - Product Information

Application	WB
Primary Accession	Q96E14
Reactivity	Human, Mouse
Host	Polyclonal, Rabbit, IgG
Clonality	Polyclonal
Calculated MW	15865

RM12 Rabbit Polyclonal Antibody - Additional Information**Gene ID** 116028**Other Names**

RecQ-mediated genome instability protein 2, hRM12, BLM-associated protein of 18 kDa, BLAP18, RM12, C16orf75

Dilution

WB~~1:1000

Storage Conditions

-20°C

RM12 Rabbit Polyclonal Antibody - Protein Information**Name** RM12**Synonyms** C16orf75**Function**

Essential component of the RMI complex, a complex that plays an important role in the processing of homologous recombination intermediates. It is required to regulate sister chromatid segregation and to limit DNA crossover. Essential for the stability, localization, and function of BLM, TOP3A, and complexes containing BLM. In the RMI complex, it is required to target BLM to chromatin and stress-induced nuclear foci and mitotic phosphorylation of BLM.

Cellular Location

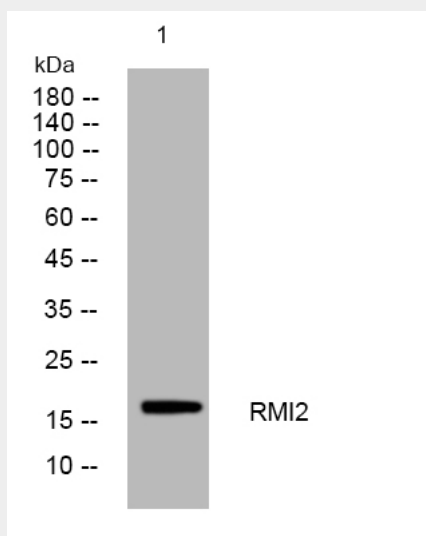
Nucleus. Note=Colocalizes with BLM at nuclear DNA repair foci

RM12 Rabbit Polyclonal Antibody - Protocols

Provided below are standard protocols that you may find useful for product applications.

- [Western Blot](#)
- [Blocking Peptides](#)
- [Dot Blot](#)
- [Immunohistochemistry](#)
- [Immunofluorescence](#)
- [Immunoprecipitation](#)
- [Flow Cytometry](#)
- [Cell Culture](#)

RMI2 Rabbit Polyclonal Antibody - Images



Western blot analysis of lysates from Hela cells, primary antibody was diluted at 1:1000, 4° over night

RMI2 Rabbit Polyclonal Antibody - Background

RMI2 is a component of the BLM (RECQL3; MIM 604610) complex, which plays a role in homologous recombination-dependent DNA repair and is essential for genome stability (Xu et al., 2008 [PubMed 18923082]).[supplied by OMIM, Nov 2008],