

KRA51 Rabbit Polyclonal Antibody
KRA51 Rabbit Polyclonal Antibody
Catalog # AP93388**Specification**

KRA51 Rabbit Polyclonal Antibody - Product Information

Application	WB
Primary Accession	Q6L8H4
Reactivity	Human, Mouse
Host	Polyclonal, Rabbit, IgG
Clonality	Polyclonal
Calculated MW	24194

KRA51 Rabbit Polyclonal Antibody - Additional Information**Gene ID** 387264**Other Names**

Keratin-associated protein 5-1, Keratin, cuticle, ultrahigh sulphur 1-like, Keratin-associated protein 5.1, Ultrahigh sulfur keratin-associated protein 5.1, KRTAP5-1, KAP5.1, KRN1L, KRTAP5.1

Storage Conditions

-20°C

KRA51 Rabbit Polyclonal Antibody - Protein Information**Name** KRTAP5-1**Synonyms** KAP5.1, KRN1L, KRTAP5.1**Function**

In the hair cortex, hair keratin intermediate filaments are embedded in an interfilamentous matrix, consisting of hair keratin-associated protein (KRTAP), which are essential for the formation of a rigid and resistant hair shaft through their extensive disulfide bond cross-linking with abundant cysteine residues of hair keratins. The matrix proteins include the high-sulfur and high-glycine-tyrosine keratins.

Tissue Location

Expressed in hair root but not in skin. Expressed also in lung, pancreas, ovary, testis.

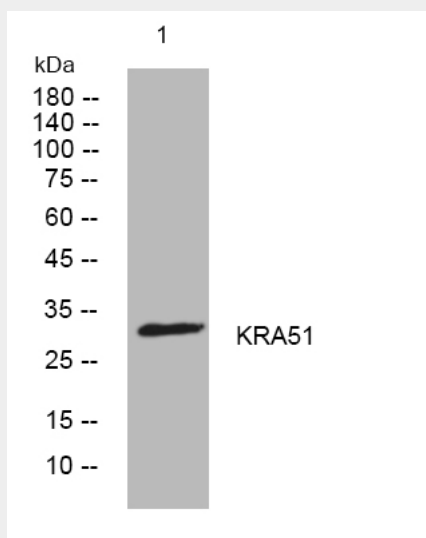
KRA51 Rabbit Polyclonal Antibody - Protocols

Provided below are standard protocols that you may find useful for product applications.

- [Western Blot](#)
- [Blocking Peptides](#)

- [Dot Blot](#)
- [Immunohistochemistry](#)
- [Immunofluorescence](#)
- [Immunoprecipitation](#)
- [Flow Cytometry](#)
- [Cell Culture](#)

KRA51 Rabbit Polyclonal Antibody - Images



Western blot analysis of lysates from U2OS cells, primary antibody was diluted at 1:1000, 4° over night