

TTLL3 Rabbit Polyclonal Antibody
TTLL3 Rabbit Polyclonal Antibody
Catalog # AP93398**Specification**

TTLL3 Rabbit Polyclonal Antibody - Product Information

Application	WB
Primary Accession	Q9Y4R7
Reactivity	Human, Mouse
Host	Polyclonal, Rabbit, IgG
Clonality	Polyclonal
Calculated MW	87414

TTLL3 Rabbit Polyclonal Antibody - Additional Information**Gene ID** 26140**Other Names**

Tubulin monoglycylase TTLL3, HOTTL, Tubulin--tyrosine ligase-like protein 3, TTLL3 (<http://www.genenames.org/cgi-bin/gene_symbol_report?hgnc_id=24483>
target="_blank">HGNC:24483)

Dilution

WB~~1:1000

Storage Conditions

-20°C

TTLL3 Rabbit Polyclonal Antibody - Protein Information**Name** TTLL3 ([HGNC:24483](#))**Function**

Monoglycylase which modifies alpha- and beta-tubulin, adding a single glycine on the gamma-carboxyl groups of specific glutamate residues to generate monoglycine side chains within the C-terminal tail of tubulin. Not involved in elongation step of the polyglycylation reaction (By similarity). Preferentially glycyates a beta-tail peptide over the alpha-tail, although shifts its preference toward alpha-tail as beta-tail glutamylation increases (By similarity). Competes with polyglutamylases for modification site on beta-tubulin substrate, thereby creating an anticorrelation between glycylation and glutamylation reactions (By similarity). Together with TTLL8, mediates microtubule glycylation of primary and motile cilia, which is essential for their stability and maintenance (By similarity). Involved in microtubule glycylation of primary cilia in colon which controls cell proliferation of epithelial cells and plays an essential role in colon cancer development (PubMed:<<http://www.uniprot.org/citations/25180231>>25180231). Together with TTLL8, glycyates sperm flagella which regulates axonemal dynein motor activity, thereby controlling flagellar beat, directional sperm swimming and male fertility (By similarity).

Cellular Location

Cytoplasm, cytoskeleton. Cell projection, cilium {ECO:0000250|UniProtKB:A4Q9E5}. Cytoplasm, cytoskeleton, cilium axoneme {ECO:0000250|UniProtKB:A4Q9E5}. Cytoplasm, cytoskeleton, flagellum axoneme {ECO:0000250|UniProtKB:A4Q9E5}

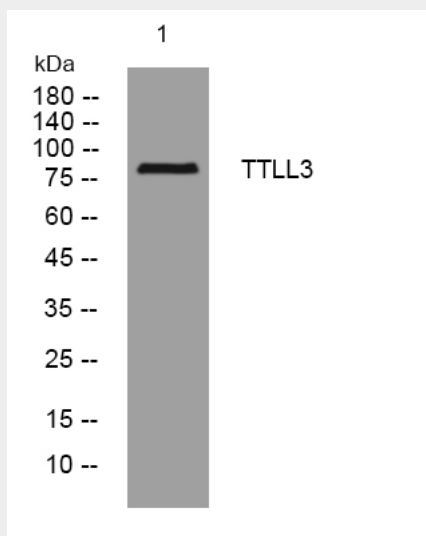
Tissue Location

Expressed in brain, heart, kidney, testis, liver, lung, muscle, spleen, trachea and colon.

TTLL3 Rabbit Polyclonal Antibody - Protocols

Provided below are standard protocols that you may find useful for product applications.

- [Western Blot](#)
- [Blocking Peptides](#)
- [Dot Blot](#)
- [Immunohistochemistry](#)
- [Immunofluorescence](#)
- [Immunoprecipitation](#)
- [Flow Cytometry](#)
- [Cell Culture](#)

TTLL3 Rabbit Polyclonal Antibody - Images

Western blot analysis of lysates from HpeG2 cells, primary antibody was diluted at 1:1000, 4°over night