

**RBM19 Rabbit Polyclonal Antibody**  
**RBM19 Rabbit Polyclonal Antibody**  
**Catalog # AP93410****Specification**

---

**RBM19 Rabbit Polyclonal Antibody - Product Information**

Application	WB
Primary Accession	<a href="#">Q9Y4C8</a>
Reactivity	Human, Mouse
Host	Polyclonal, Rabbit, IgG
Clonality	Polyclonal
Calculated MW	107332

**RBM19 Rabbit Polyclonal Antibody - Additional Information****Gene ID** 9904**Other Names**

Probable RNA-binding protein 19, RNA-binding motif protein 19, RBM19, KIAA0682

**Dilution**

WB~~1:1000

**Storage Conditions**

-20°C

**RBM19 Rabbit Polyclonal Antibody - Protein Information****Name** RBM19**Synonyms** KIAA0682**Function**

Plays a role in embryo pre-implantation development.

**Cellular Location**

Nucleus, nucleolus. Nucleus, nucleoplasm Cytoplasm. Chromosome. Note=In discrete foci distributed throughout the cytoplasm and nucleoplasm during the 4 to 8 cell stages and the morula stage, but not in the periphery of the nucleolar precursor body (NPB). During blastocyst development, becomes increasingly localized to the nucleolus and less to the cytoplasm. At the late blastocyst stage, localized predominantly in the nucleolus Localized in the nucleolus during interphase and to the perichromosomal sheath during mitosis. Does not colocalize in the cytoplasm with GW182 in P-bodies. May translocate to the nucleolus upon early embryonic development (By similarity). Colocalizes with NPM1 during interphase By late prophase, metaphase, anaphase and telophase, associates with the chromosome periphery. By telophase localizes to NPB.

**Tissue Location**

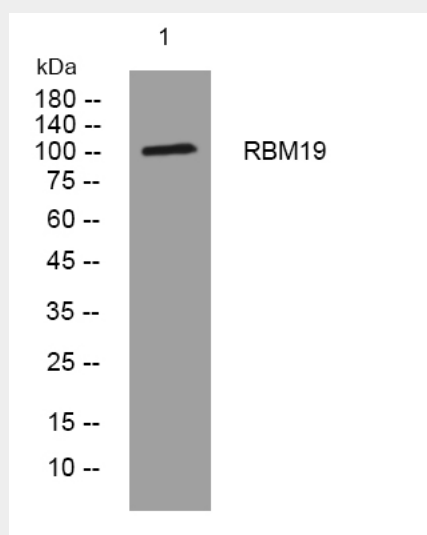
Expressed in the crypts of Lieberkuhn of the intestine and in intestinal neoplasia (at protein level)

### **RBM19 Rabbit Polyclonal Antibody - Protocols**

Provided below are standard protocols that you may find useful for product applications.

- [Western Blot](#)
- [Blocking Peptides](#)
- [Dot Blot](#)
- [Immunohistochemistry](#)
- [Immunofluorescence](#)
- [Immunoprecipitation](#)
- [Flow Cytometry](#)
- [Cell Culture](#)

### **RBM19 Rabbit Polyclonal Antibody - Images**



Western blot analysis of lysates from AD293 cells, primary antibody was diluted at 1:1000, 4° over night

### **RBM19 Rabbit Polyclonal Antibody - Background**

This gene encodes a nucleolar protein that contains six RNA-binding motifs. The encoded protein may be involved in regulating ribosome biogenesis. Multiple alternatively spliced variants, encoding the same protein, have been identified.[provided by RefSeq, Apr 2009],