

POK17 Rabbit Polyclonal Antibody
POK17 Rabbit Polyclonal Antibody
Catalog # AP93415

Specification

POK17 Rabbit Polyclonal Antibody - Product Information

Application	WB
Primary Accession	P63136
Reactivity	Rat, Human
Host	Polyclonal, Rabbit, IgG
Clonality	Polyclonal
Calculated MW	107472

POK17 Rabbit Polyclonal Antibody - Additional Information

Other Names

Endogenous retrovirus group K member 25 Pol protein, HERV-K_11q22.1 provirus ancestral Pol protein, Reverse transcriptase, RT, 2.7.7.49, Ribonuclease H, RNase H, 3.1.26.4, Integrase, IN, ERVK-25

Dilution

WB~~1:1000

Storage Conditions

-20°C

POK17 Rabbit Polyclonal Antibody - Protein Information

Name ERVK-25

Function

Early post-infection, the reverse transcriptase converts the viral RNA genome into double-stranded viral DNA. The RNase H domain of the reverse transcriptase performs two functions. It degrades the RNA template and specifically removes the RNA primer from the RNA/DNA hybrid. Following nuclear import, the integrase catalyzes the insertion of the linear, double-stranded viral DNA into the host cell chromosome. Endogenous Pol proteins may have kept, lost or modified their original function during evolution (By similarity).

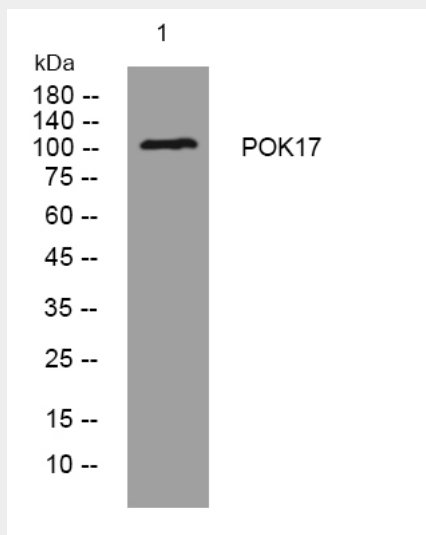
POK17 Rabbit Polyclonal Antibody - Protocols

Provided below are standard protocols that you may find useful for product applications.

- [Western Blot](#)
- [Blocking Peptides](#)
- [Dot Blot](#)
- [Immunohistochemistry](#)

- [Immunofluorescence](#)
- [Immunoprecipitation](#)
- [Flow Cytometry](#)
- [Cell Culture](#)

POK17 Rabbit Polyclonal Antibody - Images



Western blot analysis of lysates from SW480 cells, primary antibody was diluted at 1:1000, 4°over night