

GPM6A Antibody (C-term)
Affinity Purified Rabbit Polyclonal Antibody (Pab)
Catalog # AP9341b**Specification**

GPM6A Antibody (C-term) - Product Information

Application	WB, FC,E
Primary Accession	P51674
Other Accession	Q812E9 , P35802 , Q0VD07
Reactivity	Human
Predicted	Bovine, Mouse, Rat
Host	Rabbit
Clonality	Polyclonal
Isotype	Rabbit IgG
Calculated MW	31210
Antigen Region	232-259

GPM6A Antibody (C-term) - Additional Information**Gene ID** 2823**Other Names**

Neuronal membrane glycoprotein M6-a, M6a, GPM6A, M6A

Target/Specificity

This GPM6A antibody is generated from rabbits immunized with a KLH conjugated synthetic peptide between 232-259 amino acids from the C-terminal region of human GPM6A.

Dilution

WB~~1:1000

FC~~1:10~50

E~~Use at an assay dependent concentration.

Format

Purified polyclonal antibody supplied in PBS with 0.09% (W/V) sodium azide. This antibody is purified through a protein A column, followed by peptide affinity purification.

Storage

Maintain refrigerated at 2-8°C for up to 2 weeks. For long term storage store at -20°C in small aliquots to prevent freeze-thaw cycles.

Precautions

GPM6A Antibody (C-term) is for research use only and not for use in diagnostic or therapeutic procedures.

GPM6A Antibody (C-term) - Protein Information**Name** GPM6A

Synonyms M6A

Function Involved in neuronal differentiation, including differentiation and migration of neuronal stem cells. Plays a role in neuronal plasticity and is involved in neurite and filopodia outgrowth, filopodia motility and probably synapse formation. GPM6A-induced filopodia formation involves mitogen-activated protein kinase (MAPK) and Src signaling pathways. May be involved in neuronal NGF-dependent Ca(2+) influx. May be involved in regulation of endocytosis and intracellular trafficking of G-protein-coupled receptors (GPCRs); enhances internalization and recycling of mu-type opioid receptor.

Cellular Location

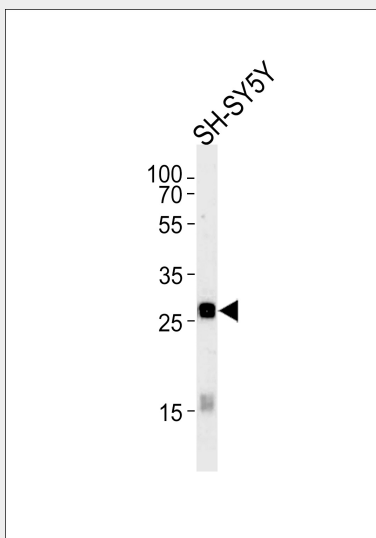
Cell membrane {ECO:0000250|UniProtKB:P35802}; Multi-pass membrane protein {ECO:0000250|UniProtKB:P35802}. Cell projection, axon {ECO:0000250|UniProtKB:P35802}. Cell projection, growth cone {ECO:0000250|UniProtKB:P35802}. Cell projection, dendritic spine {ECO:0000250|UniProtKB:Q812E9}. Cell projection, filopodium {ECO:0000250|UniProtKB:Q812E9}. Cell projection, neuron projection {ECO:0000250|UniProtKB:Q812E9}. Note=Localizes to cholesterol-rich lipid rafts of the plasma membrane of hippocampal neurons. Localized to plasma membrane of cell bodies and neurites of hippocampal neurons Localized in membrane protrusions (filopodia and spines) of primary hippocampal neurons (By similarity). Localized to the growth cone edge membrane of elongating axons (By similarity) {ECO:0000250|UniProtKB:P35802, ECO:0000250|UniProtKB:Q812E9}

GPM6A Antibody (C-term) - Protocols

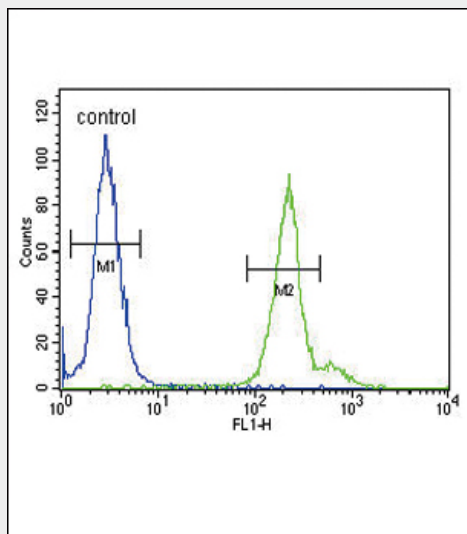
Provided below are standard protocols that you may find useful for product applications.

- [Western Blot](#)
- [Blocking Peptides](#)
- [Dot Blot](#)
- [Immunohistochemistry](#)
- [Immunofluorescence](#)
- [Immunoprecipitation](#)
- [Flow Cytometry](#)
- [Cell Culture](#)

GPM6A Antibody (C-term) - Images



GPM6A Antibody (C-term) (Cat. #AP9341b) western blot analysis in SH-SY5Y cell line lysates (35ug/lane). This demonstrates the GPM6A antibody detected the GPM6A protein (arrow).



GPM6A Antibody (C-term) (Cat. #AP9341b) flow cytometric analysis of 293 cells (right histogram) compared to a negative control cell (left histogram). FITC-conjugated goat-anti-rabbit secondary antibodies were used for the analysis.

GPM6A Antibody (C-term) - References

Michibata, H. Stem Cells Dev. 18 (4), 629-639 (2009) Boks, M.P. Am. J. Med. Genet. B Neuropsychiatr. Genet. 147B (6), 707-711 (2008) Liang, Y.J. Cell Res. 18 (7), 768-779 (2008)