

**MER34 Rabbit Polyclonal Antibody**  
**MER34 Rabbit Polyclonal Antibody**  
**Catalog # AP93428****Specification**

---

**MER34 Rabbit Polyclonal Antibody - Product Information**

Application	WB
Primary Accession	<a href="#">Q9H9K5</a>
Reactivity	Rat, Human
Host	Polyclonal, Rabbit, IgG
Clonality	Polyclonal
Calculated MW	63547

**MER34 Rabbit Polyclonal Antibody - Additional Information****Gene ID** 100288413**Other Names**

Endogenous retroviral envelope protein HEMO, Endogenous retrovirus group MER34 member 1 Env polyprotein, HERV-MER\_4q12 provirus ancestral Env polyprotein, Human endogenous MER34 (medium-reiteration-frequency-family-34) open reading frame, Human endogenous MER34 ORF, HEMO, Endogenous retroviral envelope protein HEMO, secreted form, Endogenous retroviral envelope protein HEMO, 48 kDa form, ERVMER34-1 ([http://www.genenames.org/cgi-bin/gene\\_symbol\\_report?hgnc\\_id=42970](http://www.genenames.org/cgi-bin/gene_symbol_report?hgnc_id=42970))  
target="\_blank">HGNC:42970</a>)

**Dilution**

WB~~1:1000

**Storage Conditions**

-20°C

**MER34 Rabbit Polyclonal Antibody - Protein Information****Name** ERVMER34-1 ([HGNC:42970](#))**Function**

Endogenous envelope proteins originate from retroviral envelope proteins, which mediate receptor recognition and membrane fusion during early infection. Endogenous envelope proteins may have kept, lost or modified their original function during evolution.

**Cellular Location**

[Endogenous retroviral envelope protein HEMO]: Cell membrane; Single-pass type I membrane protein. Note=This uncleaved form present at the cell surface represents the major form (PubMed:28739914)

**Tissue Location**

Expressed at high level in the placenta and stem cells (at protein level) (PubMed:28739914). Also

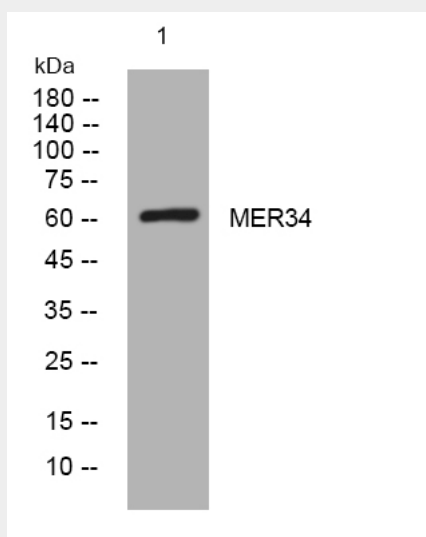
expressed in the kidney but at a lower level (PubMed:28739914). Endogenous retroviral envelope protein HEMO, secreted form: Present in the blood of pregnant women (at protein level) (PubMed:28739914)

### **MER34 Rabbit Polyclonal Antibody - Protocols**

Provided below are standard protocols that you may find useful for product applications.

- [Western Blot](#)
- [Blocking Peptides](#)
- [Dot Blot](#)
- [Immunohistochemistry](#)
- [Immunofluorescence](#)
- [Immunoprecipitation](#)
- [Flow Cytometry](#)
- [Cell Culture](#)

### **MER34 Rabbit Polyclonal Antibody - Images**



Western blot analysis of lysates from Hela cells, primary antibody was diluted at 1:1000, 4° over night