

ZBPB1 Rabbit Polyclonal Antibody
ZBPB1 Rabbit Polyclonal Antibody
Catalog # AP93439**Specification**

ZBPB1 Rabbit Polyclonal Antibody - Product Information

Application	WB
Primary Accession	Q9BS86
Reactivity	Human, Mouse
Host	Polyclonal, Rabbit, IgG
Clonality	Polyclonal
Calculated MW	40142

ZBPB1 Rabbit Polyclonal Antibody - Additional Information**Gene ID** 11055**Other Names**

Zona pellucida-binding protein 1, Inner acrosomal membrane IAM38, Sp38, ZBPB, ZBPB1

Dilution

WB~~1:1000

Storage Conditions

-20°C

ZBPB1 Rabbit Polyclonal Antibody - Protein Information**Name** ZBPB**Synonyms** ZBPB1**Function**

Plays a role in acrosome compaction and sperm morphogenesis (PubMed:21911476). Is implicated in sperm-oocyte interaction during fertilization (By similarity).

Cellular Location

Cytoplasmic vesicle, secretory vesicle, acrosome. Cytoplasmic vesicle, secretory vesicle, acrosome membrane {ECO:0000250|UniProtKB:Q62522}; Peripheral membrane protein {ECO:0000250|UniProtKB:Q62522}. Secreted. Note=First localized in acrosome granule, later migrates to the inner and outer acrosomal membrane. Released after the acrosomal reaction {ECO:0000250|UniProtKB:Q62522}

Tissue Location

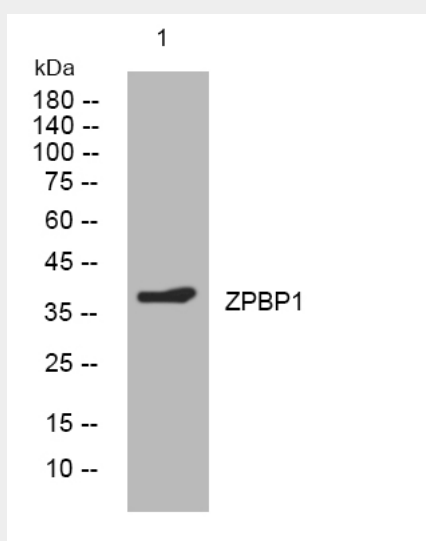
Expressed specifically in testis.

ZPBP1 Rabbit Polyclonal Antibody - Protocols

Provided below are standard protocols that you may find useful for product applications.

- [Western Blot](#)
- [Blocking Peptides](#)
- [Dot Blot](#)
- [Immunohistochemistry](#)
- [Immunofluorescence](#)
- [Immunoprecipitation](#)
- [Flow Cytometry](#)
- [Cell Culture](#)

ZPBP1 Rabbit Polyclonal Antibody - Images



Western blot analysis of lysates from KB cells, primary antibody was diluted at 1:1000, 4° over night

ZPBP1 Rabbit Polyclonal Antibody - Background

ZPBP is one of several proteins that are thought to participate in secondary binding between acrosome-reacted sperm and the egg-specific extracellular matrix, the zona pellucida (McLeskey et al., 1998 [PubMed 9378618]).[supplied by OMIM, Aug 2008],