

RBV1C Rabbit Polyclonal Antibody
RBV1C Rabbit Polyclonal Antibody
Catalog # AP93448**Specification**

RBV1C Rabbit Polyclonal Antibody - Product Information

Application	WB
Primary Accession	P0DJ04
Reactivity	Rat, Human
Host	Polyclonal, Rabbit, IgG
Clonality	Polyclonal
Calculated MW	55784

RBV1C Rabbit Polyclonal Antibody - Additional Information**Other Names**

RNA-binding motif protein, Y chromosome, family 1 member C, RBMY1C

Storage Conditions

-20°C

RBV1C Rabbit Polyclonal Antibody - Protein Information

Name RBMY1C

Function

RNA-binding protein involved in pre-mRNA splicing. Required for sperm development. Acts additively with TRA2B to promote exon 7 inclusion of the survival motor neuron SMN. Binds non-specifically to mRNAs.

Cellular Location

Nucleus.

Tissue Location

Testis-specific.

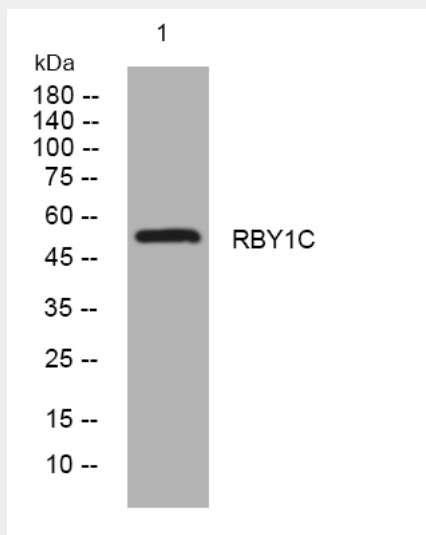
RBV1C Rabbit Polyclonal Antibody - Protocols

Provided below are standard protocols that you may find useful for product applications.

- [Western Blot](#)
- [Blocking Peptides](#)
- [Dot Blot](#)
- [Immunohistochemistry](#)
- [Immunofluorescence](#)
- [Immunoprecipitation](#)

- [Flow Cytometry](#)
- [Cell Culture](#)

RBV1C Rabbit Polyclonal Antibody - Images



Western blot analysis of lysates from VEC cells, primary antibody was diluted at 1:1000, 4° over night