

EYS Rabbit Polyclonal Antibody
EYS Rabbit Polyclonal Antibody
Catalog # AP93472**Specification**

EYS Rabbit Polyclonal Antibody - Product Information

Application	IHC, IF
Primary Accession	Q5T1H1
Reactivity	Rat, Human
Host	Polyclonal, Rabbit, IgG
Clonality	Polyclonal
Calculated MW	350796

EYS Rabbit Polyclonal Antibody - Additional Information**Gene ID** 346007**Other Names**

Protein eyes shut homolog, Epidermal growth factor-like protein 10, EGF-like protein 10, Epidermal growth factor-like protein 11, EGF-like protein 11, Protein spacemaker homolog, EYS, C6orf178, C6orf179, C6orf180, EGFL10, EGFL11, SPAM

Dilution

IHC~~1:100~500

IF~~1:50~200

Storage Conditions

-20°C

EYS Rabbit Polyclonal Antibody - Protein Information**Name** EYS**Synonyms** C6orf178, C6orf179, C6orf180, EGFL10, EG**Function**

Required to maintain the integrity of photoreceptor cells (PubMed:18836446). Specifically required for normal morphology of the photoreceptor ciliary pocket, and might thus facilitate protein trafficking between the photoreceptor inner and outer segments via the transition zone (By similarity).

Cellular Location

Cell projection, cilium, photoreceptor outer segment. Cell projection, cilium. Cytoplasm, cytoskeleton, cilium axoneme. Cytoplasm, cytoskeleton, microtubule organizing center, centrosome. Secreted, extracellular space, extracellular matrix, interphotoreceptor matrix. Note=Localizes to discrete puncta at, or adjacent to, the photoreceptor connecting cilium (PubMed:27737822) Highly expressed in cone photoreceptor outer segments (PubMed:27737822).

Weakly expressed in rod photoreceptor outer segments (By similarity). May localize to the cilium axoneme (PubMed:27846257) May also be secreted into the interphotoreceptor extracellular matrix (PubMed:27737822). {ECO:0000250|UniProtKB:A0A2K5V015, ECO:0000269|PubMed:27737822, ECO:0000269|PubMed:27846257}

Tissue Location

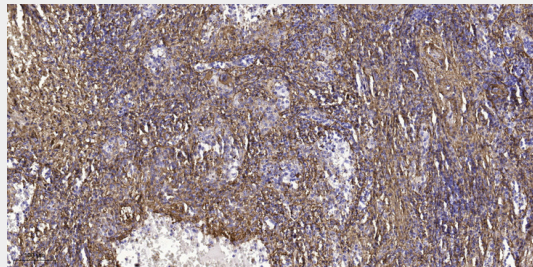
Expressed in retina (at protein level) (PubMed:18836446, PubMed:18976725, PubMed:27737822, PubMed:27846257) Isoform 1: Detected in retina (PubMed:27846257). Isoform 2: Detected in retina (PubMed:27846257). Isoform 3: Strongly expressed in retina and testis (PubMed:27846257). Isoform 4: Strongly expressed in testis, and weakly expressed in retina (PubMed:27846257)

EYS Rabbit Polyclonal Antibody - Protocols

Provided below are standard protocols that you may find useful for product applications.

- [Western Blot](#)
- [Blocking Peptides](#)
- [Dot Blot](#)
- [Immunohistochemistry](#)
- [Immunofluorescence](#)
- [Immunoprecipitation](#)
- [Flow Cytometry](#)
- [Cell Culture](#)

EYS Rabbit Polyclonal Antibody - Images



Immunohistochemical analysis of paraffin-embedded human spleen tissue. 1,primary Antibody was diluted at 1:200(4° overnight). 2, Sodium citrate pH 6.0 was used for antigen retrieval(>98°C,20min). 3,Secondary antibody was diluted at 1:200

EYS Rabbit Polyclonal Antibody - Background

The product of this gene contains multiple epidermal growth factor (EGF)-like and LamG domains. The protein is expressed in the photoreceptor layer of the retina, and the gene is mutated in autosomal recessive retinitis pigmentosa. Multiple transcript variants encoding different isoforms have been found for this gene. [provided by RefSeq, Dec 2008],