

KRA46 Rabbit Polyclonal Antibody
KRA46 Rabbit Polyclonal Antibody
Catalog # AP93477**Specification**

KRA46 Rabbit Polyclonal Antibody - Product Information

Application	WB
Primary Accession	Q9BYQ5
Reactivity	Rat, Human
Host	Polyclonal, Rabbit, IgG
Clonality	Polyclonal
Calculated MW	21825

KRA46 Rabbit Polyclonal Antibody - Additional Information**Gene ID** 81871**Other Names**

Keratin-associated protein 4-6, Keratin-associated protein 4-15, Keratin-associated protein 4.15, Keratin-associated protein 4.6, Ultrahigh sulfur keratin-associated protein 4.15, KRTAP4-6, KAP4.15, KRTAP4-15, KRTAP4.15, KRTAP4.6

Dilution

WB~~1:1000

Storage Conditions

-20°C

KRA46 Rabbit Polyclonal Antibody - Protein Information**Name** KRTAP4-6**Synonyms** KAP4.15, KRTAP4-15, KRTAP4.15, KRTAP4.6**Function**

In the hair cortex, hair keratin intermediate filaments are embedded in an interfilamentous matrix, consisting of hair keratin-associated proteins (KRTAP), which are essential for the formation of a rigid and resistant hair shaft through their extensive disulfide bond cross-linking with abundant cysteine residues of hair keratins. The matrix proteins include the high-sulfur and high-glycine-tyrosine keratins.

Tissue Location

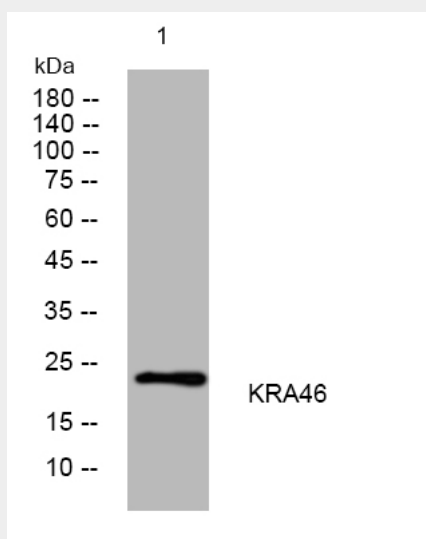
Expressed in the hair follicles.

KRA46 Rabbit Polyclonal Antibody - Protocols

Provided below are standard protocols that you may find useful for product applications.

- [Western Blot](#)
- [Blocking Peptides](#)
- [Dot Blot](#)
- [Immunohistochemistry](#)
- [Immunofluorescence](#)
- [Immunoprecipitation](#)
- [Flow Cytometry](#)
- [Cell Culture](#)

KRA46 Rabbit Polyclonal Antibody - Images



Western blot analysis of lysates from VEC cells, primary antibody was diluted at 1:1000, 4° over night