

STB5L Rabbit Polyclonal Antibody
STB5L Rabbit Polyclonal Antibody
Catalog # AP93479**Specification**

STB5L Rabbit Polyclonal Antibody - Product Information

Application	WB
Primary Accession	Q9Y2K9
Reactivity	Human, Mouse
Host	Polyclonal, Rabbit, IgG
Clonality	Polyclonal
Calculated MW	131887

STB5L Rabbit Polyclonal Antibody - Additional Information**Gene ID** 9515**Other Names**

Syntaxin-binding protein 5-like, Lethal(2) giant larvae protein homolog 4, Tomosyn-2, STXBP5L, KIAA1006, LLGL4

Storage Conditions

-20°C

STB5L Rabbit Polyclonal Antibody - Protein Information**Name** STXBP5L**Synonyms** KIAA1006, LLGL4**Function**

Plays a role in vesicle trafficking and exocytosis inhibition. In pancreatic beta-cells, inhibits insulin secretion probably by interacting with and regulating STX1A and STX4, key t-SNARE proteins involved in the fusion of insulin granules to the plasma membrane. Also plays a role in neurotransmitter release by inhibiting basal acetylcholine release from axon terminals and by preventing synaptic fatigue upon repetitive stimulation (By similarity). Promotes as well axonal outgrowth (PubMed: <http://www.uniprot.org/citations/25504045> target="_blank">25504045).

Cellular Location

Cytoplasm. Cell membrane; Peripheral membrane protein. Membrane; Peripheral membrane protein Note=Cytoplasmic, and associated with vesicular membranes and the plasma membrane.

Tissue Location

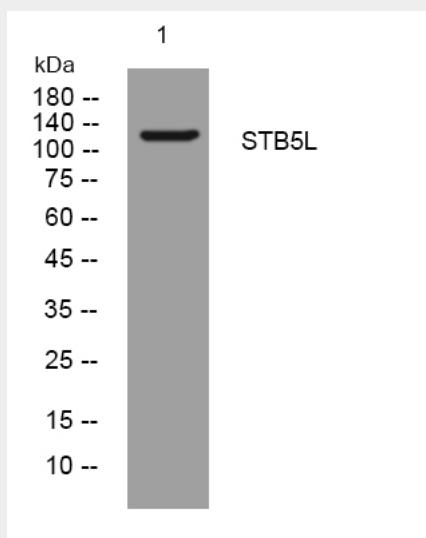
Detected in kidney, hippocampus and lung carcinoma.

STB5L Rabbit Polyclonal Antibody - Protocols

Provided below are standard protocols that you may find useful for product applications.

- [Western Blot](#)
- [Blocking Peptides](#)
- [Dot Blot](#)
- [Immunohistochemistry](#)
- [Immunofluorescence](#)
- [Immunoprecipitation](#)
- [Flow Cytometry](#)
- [Cell Culture](#)

STB5L Rabbit Polyclonal Antibody - Images



Western blot analysis of lysates from CACO2 cells, primary antibody was diluted at 1:1000, 4° over night