

KRA59 Rabbit Polyclonal Antibody
KRA59 Rabbit Polyclonal Antibody
Catalog # AP93490**Specification**

KRA59 Rabbit Polyclonal Antibody - Product Information

Application	WB
Primary Accession	P26371
Reactivity	Rat, Human
Host	Polyclonal, Rabbit, IgG
Clonality	Polyclonal
Calculated MW	16276

KRA59 Rabbit Polyclonal Antibody - Additional Information**Gene ID** 3846**Other Names**

Keratin-associated protein 5-9, Keratin, cuticle, ultrahigh sulfur 1, Keratin, ultra high-sulfur matrix protein A, Keratin-associated protein 5.9, UHS keratin A, UHS KerA, Ultrahigh sulfur keratin-associated protein 5.9, KRTAP5-9, KAP5.9, KRN1, KRTAP5.9, UHSK1

Dilution

WB~~1:1000

Storage Conditions

-20°C

KRA59 Rabbit Polyclonal Antibody - Protein Information**Name** KRTAP5-9**Synonyms** KAP5.9, KRN1, KRTAP5.9, UHSK1**Function**

In the hair cortex, hair keratin intermediate filaments are embedded in an interfilamentous matrix, consisting of hair keratin-associated protein (KRTAP), which are essential for the formation of a rigid and resistant hair shaft through their extensive disulfide bond cross-linking with abundant cysteine residues of hair keratins. The matrix proteins include the high-sulfur and high-glycine-tyrosine keratins.

Tissue Location

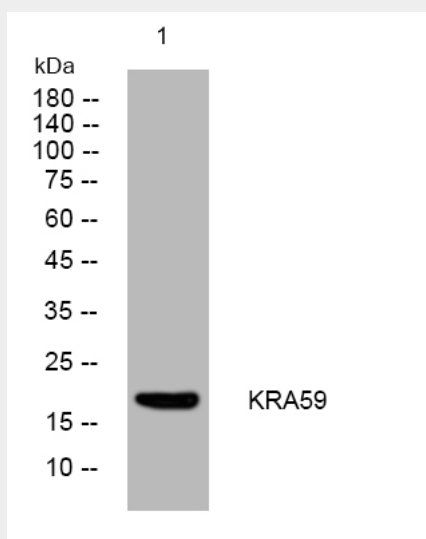
Restricted to hair root, not detected in any other tissues. Expressed in cuticle layers of differentiating hair follicles

KRA59 Rabbit Polyclonal Antibody - Protocols

Provided below are standard protocols that you may find useful for product applications.

- [Western Blot](#)
- [Blocking Peptides](#)
- [Dot Blot](#)
- [Immunohistochemistry](#)
- [Immunofluorescence](#)
- [Immunoprecipitation](#)
- [Flow Cytometry](#)
- [Cell Culture](#)

KRA59 Rabbit Polyclonal Antibody - Images



Western blot analysis of lysates from MCF-7 cells, primary antibody was diluted at 1:1000, 4° over night