

KR222 Rabbit Polyclonal Antibody
KR222 Rabbit Polyclonal Antibody
Catalog # AP93499**Specification**

KR222 Rabbit Polyclonal Antibody - Product Information

Application	IHC, IF
Primary Accession	Q3LI68
Reactivity	Rat, Human
Host	Polyclonal, Rabbit, IgG
Clonality	Polyclonal
Calculated MW	5218

KR222 Rabbit Polyclonal Antibody - Additional Information**Gene ID** 100288287**Other Names**

Keratin-associated protein 22-2, KRTAP22-2, KAP22.2

Storage Conditions

-20°C

KR222 Rabbit Polyclonal Antibody - Protein Information**Name** KRTAP22-2**Synonyms** KAP22.2**Function**

In the hair cortex, hair keratin intermediate filaments are embedded in an interfilamentous matrix, consisting of hair keratin-associated proteins (KRTAP), which are essential for the formation of a rigid and resistant hair shaft through their extensive disulfide bond cross-linking with abundant cysteine residues of hair keratins. The matrix proteins include the high-sulfur and high-glycine-tyrosine keratins (By similarity).

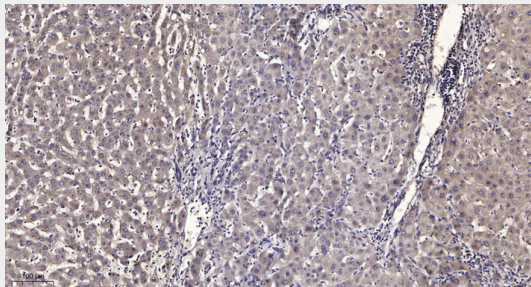
KR222 Rabbit Polyclonal Antibody - Protocols

Provided below are standard protocols that you may find useful for product applications.

- [Western Blot](#)
- [Blocking Peptides](#)
- [Dot Blot](#)
- [Immunohistochemistry](#)
- [Immunofluorescence](#)
- [Immunoprecipitation](#)

- [Flow Cytometry](#)
- [Cell Culture](#)

KR222 Rabbit Polyclonal Antibody - Images



Immunohistochemical analysis of paraffin-embedded human liver cancer. 1, Antibody was diluted at 1:200(4° overnight). 2, Tris-EDTA,pH9.0 was used for antigen retrieval. 3,Secondary antibody was diluted at 1:200(room temperature, 45min).