

TRY6 Rabbit Polyclonal Antibody
TRY6 Rabbit Polyclonal Antibody
Catalog # AP93511**Specification**

TRY6 Rabbit Polyclonal Antibody - Product Information

Application	WB
Primary Accession	Q8NHM4
Reactivity	Rat, Human
Host	Polyclonal, Rabbit, IgG
Clonality	Polyclonal
Calculated MW	26537

TRY6 Rabbit Polyclonal Antibody - Additional Information**Other Names**

Putative trypsin-6, 3.4.21.4, Serine protease 3 pseudogene 2, Trypsinogen C, PRSS3P2, T6, TRY6

Dilution

WB~~1:1000

Storage Conditions

-20°C

TRY6 Rabbit Polyclonal Antibody - Protein Information

Name PRSS3P2

Synonyms T6, TRY6

Function

May regulate cell migration.

Cellular Location

Secreted.

Tissue Location

Overexpressed in metastasing in non small cell lung tumors, leading to an enhanced cell migration

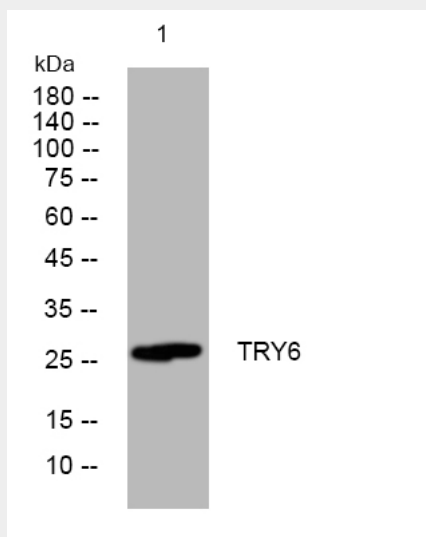
TRY6 Rabbit Polyclonal Antibody - Protocols

Provided below are standard protocols that you may find useful for product applications.

- [Western Blot](#)
- [Blocking Peptides](#)
- [Dot Blot](#)

- [Immunohistochemistry](#)
- [Immunofluorescence](#)
- [Immunoprecipitation](#)
- [Flow Cytometry](#)
- [Cell Culture](#)

TRY6 Rabbit Polyclonal Antibody - Images



Western blot analysis of lysates from SW480 cells, primary antibody was diluted at 1:1000, 4° over night

TRY6 Rabbit Polyclonal Antibody - Background

Although this locus appears to encode a protein similar to trypsinogen, the locus is thought to be a transcribed pseudogene. ESTs support its transcription, but expression of its predicted protein has not been observed. Its predicted protein sequence differs significantly from the known functional trypsinogens, including a different amino acid at the conserved residue 122 which is important for autolysis. This pseudogene and several other trypsinogen genes are localized to the T cell receptor beta locus on chromosome 7. [provided by RefSeq, Jul 2008],