

LCE1D Rabbit Polyclonal Antibody
LCE1D Rabbit Polyclonal Antibody
Catalog # AP93530**Specification**

LCE1D Rabbit Polyclonal Antibody - Product Information

Application	WB, IHC, E
Primary Accession	Q5T752
Reactivity	Rat, Human
Host	Polyclonal, Rabbit, IgG
Clonality	Polyclonal
Calculated MW	11230

LCE1D Rabbit Polyclonal Antibody - Additional Information**Gene ID** 353134**Other Names**

Late cornified envelope protein 1D, Late envelope protein 4, LCE1D, LEP4

DilutionWB~~1:1000
IHC~~1:100~500
E~~N/A**Storage Conditions**

-20°C

LCE1D Rabbit Polyclonal Antibody - Protein Information**Name** LCE1D**Synonyms** LEP4**Function**

Precursors of the cornified envelope of the stratum corneum.

Tissue Location

Skin-specific. Expression was readily detected in adult trunk skin, adult arm skin, fetal skin, penial skin, vulva, esophagus and tongue. Not expressed in the cervix, rectum, lung, colon, or placenta.

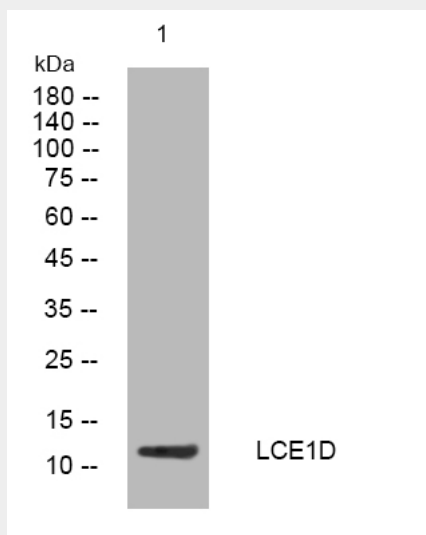
LCE1D Rabbit Polyclonal Antibody - Protocols

Provided below are standard protocols that you may find useful for product applications.

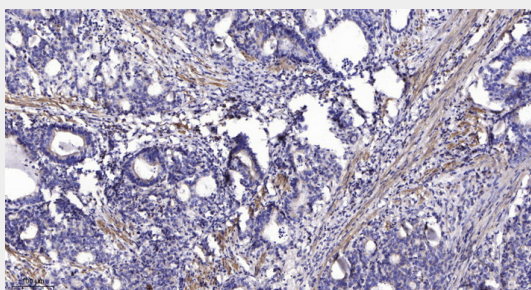
- [Western Blot](#)

- [Blocking Peptides](#)
- [Dot Blot](#)
- [Immunohistochemistry](#)
- [Immunofluorescence](#)
- [Immunoprecipitation](#)
- [Flow Cytometry](#)
- [Cell Culture](#)

LCE1D Rabbit Polyclonal Antibody - Images



Western blot analysis of lysates from HpeG2 cells, primary antibody was diluted at 1:1000, 4° over night



Immunohistochemical analysis of paraffin-embedded human Gastric adenocarcinoma. 1, Antibody was diluted at 1:200(4° overnight). 2, Tris-EDTA,pH9.0 was used for antigen retrieval. 3,Secondary antibody was diluted at 1:200(room temperature, 45min).