

**FXYD3 Rabbit Polyclonal Antibody**  
**FXYD3 Rabbit Polyclonal Antibody**  
**Catalog # AP93538****Specification**

---

**FXYD3 Rabbit Polyclonal Antibody - Product Information**

Application	IHC, IF
Primary Accession	<a href="#">Q14802</a>
Reactivity	Rat, Human, Mouse
Host	Polyclonal, Rabbit, IgG
Clonality	Polyclonal
Calculated MW	9263

**FXYD3 Rabbit Polyclonal Antibody - Additional Information****Gene ID** 5349**Other Names**

FXYD domain-containing ion transport regulator 3, Chloride conductance inducer protein Mat-8, Mammary tumor 8 kDa protein, Phospholemman-like, Sodium/potassium-transporting ATPase subunit FXYD3, FXYD3, MAT8, PLML

**Dilution**

IHC~~1:100~500

IF~~1:50~200

**Storage Conditions**

-20°C

**FXYD3 Rabbit Polyclonal Antibody - Protein Information****Name** FXYD3**Synonyms** MAT8, PLML**Function**

Associates with and regulates the activity of the sodium/potassium-transporting ATPase (NKA) which transports Na(+) out of the cell and K(+) into the cell (PubMed:<a href="http://www.uniprot.org/citations/17077088" target="\_blank">17077088</a>). Reduces glutathionylation of the NKA beta-1 subunit ATP1B1, thus reversing glutathionylation-mediated inhibition of ATP1B1 (PubMed:<a href="http://www.uniprot.org/citations/21454534" target="\_blank">21454534</a>). Induces a hyperpolarization-activated chloride current when expressed in Xenopus oocytes (PubMed:<a href="http://www.uniprot.org/citations/7836447" target="\_blank">7836447</a>).

**Cellular Location**

Cell membrane; Single-pass type I membrane protein

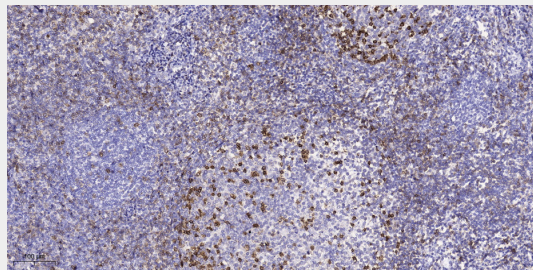
**Tissue Location**

Isoform 1: Expressed mainly in differentiated cells (at protein level). Isoform 2: Expressed mainly in undifferentiated cells (at protein level).

**FXYD3 Rabbit Polyclonal Antibody - Protocols**

Provided below are standard protocols that you may find useful for product applications.

- [Western Blot](#)
- [Blocking Peptides](#)
- [Dot Blot](#)
- [Immunohistochemistry](#)
- [Immunofluorescence](#)
- [Immunoprecipitation](#)
- [Flow Cytometry](#)
- [Cell Culture](#)

**FXYD3 Rabbit Polyclonal Antibody - Images**

Immunohistochemical analysis of paraffin-embedded human tonsil. 1, Antibody was diluted at 1:200(4° overnight). 2, Tris-EDTA,pH9.0 was used for antigen retrieval. 3,Secondary antibody was diluted at 1:200(room temperature, 45min).

**FXYD3 Rabbit Polyclonal Antibody - Background**

This gene belongs to a small family of FXYD-domain containing regulators of Na<sup>+</sup>/K<sup>+</sup> ATPases which share a 35-amino acid signature sequence domain, beginning with the sequence PFXYD, and containing 7 invariant and 6 highly conserved amino acids. This gene encodes a cell membrane protein that may regulate the function of ion-pumps and ion-channels. This gene may also play a role in tumor progression. Alternative splicing results in multiple transcript variants encoding distinct isoforms.[provided by RefSeq, Oct 2008],