

**TCHP Antibody (Center)**  
**Affinity Purified Rabbit Polyclonal Antibody (Pab)**  
**Catalog # AP9354c****Specification**

---

**TCHP Antibody (Center) - Product Information**

Application	WB, FC, IHC-P,E
Primary Accession	<a href="#">Q9BT92</a>
Reactivity	Human
Host	Rabbit
Clonality	Polyclonal
Isotype	Rabbit IgG
Calculated MW	61072
Antigen Region	291-320

**TCHP Antibody (Center) - Additional Information****Gene ID** 84260**Other Names**

Trichoplein keratin filament-binding protein, Protein TCHP, Mitochondrial protein with oncostatic activity, Mitostatin, Tumor suppressor protein, TCHP {ECO:0000312|EMBL:AAH042851}

**Target/Specificity**

This TCHP antibody is generated from rabbits immunized with a KLH conjugated synthetic peptide between 291-320 amino acids from the Central region of human TCHP.

**Dilution**

WB~~1:1000  
FC~~1:10~50  
IHC-P~~1:50~100  
E~~Use at an assay dependent concentration.

**Format**

Purified polyclonal antibody supplied in PBS with 0.09% (W/V) sodium azide. This antibody is purified through a protein A column, followed by peptide affinity purification.

**Storage**

Maintain refrigerated at 2-8°C for up to 2 weeks. For long term storage store at -20°C in small aliquots to prevent freeze-thaw cycles.

**Precautions**

TCHP Antibody (Center) is for research use only and not for use in diagnostic or therapeutic procedures.

**TCHP Antibody (Center) - Protein Information****Name** TCHP {ECO:0000312|EMBL:AAH04285.1}

**Function** Tumor suppressor which has the ability to inhibit cell growth and be pro-apoptotic during cell stress. Inhibits cell growth in bladder and prostate cancer cells by a down-regulation of HSPB1 by inhibiting its phosphorylation. May act as a 'capping' or 'branching' protein for keratin filaments in the cell periphery. May regulate K8/K18 filament and desmosome organization mainly at the apical or peripheral regions of simple epithelial cells (PubMed:[15731013](#), PubMed:[18931701](#)). Is a negative regulator of ciliogenesis (PubMed:[25270598](#)).

#### **Cellular Location**

Cytoplasm, cytoskeleton. Cytoplasm Cell membrane. Mitochondrion. Cell junction, desmosome. Cytoplasm, cytoskeleton, microtubule organizing center, centrosome

#### **Tissue Location**

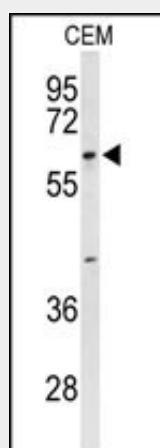
Expressed at high levels in normal urothelial and breast epithelial cells. Also expressed in the smooth muscle and endothelial cells. Reduced expression seen in advanced bladder and breast carcinomas (at protein level). Ubiquitous. Expressed at highest levels in the heart, skeletal muscle, kidney, liver and testis

### **TCHP Antibody (Center) - Protocols**

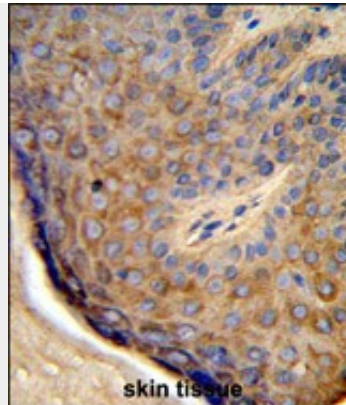
Provided below are standard protocols that you may find useful for product applications.

- [Western Blot](#)
- [Blocking Peptides](#)
- [Dot Blot](#)
- [Immunohistochemistry](#)
- [Immunofluorescence](#)
- [Immunoprecipitation](#)
- [Flow Cytometry](#)
- [Cell Culture](#)

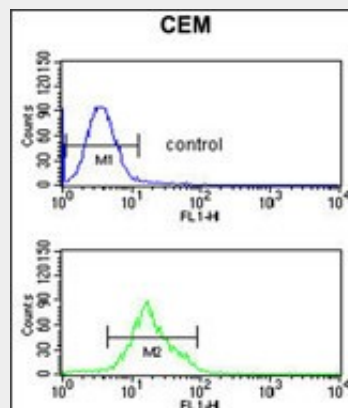
### **TCHP Antibody (Center) - Images**



Western blot analysis of TCHP Antibody (Center) (Cat. #AP9354c) in CEM cell line lysates (35ug/lane). TCHP (arrow) was detected using the purified Pab.



Formalin-fixed and paraffin-embedded human skin tissue reacted with TCHP Antibody (Center), which was peroxidase-conjugated to the secondary antibody, followed by DAB staining. This data demonstrates the use of this antibody for immunohistochemistry; clinical relevance has not been evaluated.



TCHP Antibody (Center) (Cat. #AP9354c) flow cytometric analysis of CEM cells (bottom histogram) compared to a negative control cell (top histogram). FITC-conjugated goat-anti-rabbit secondary antibodies were used for the analysis.

### **TCHP Antibody (Center) - Background**

TCHP may act as a 'capping' or 'branching' protein for keratin filaments in the cell periphery. This protein may regulate K8/K18 filament and desmosome organization mainly at the apical or peripheral regions of simple epithelial cells.

### **TCHP Antibody (Center) - References**

- Vecchione, A. Oncogene 28 (2), 257-269 (2009)
- Tokumasu, F. J. Cell. Sci. 118 (PT 5), 1091-1098 (2005)
- Nishizawa, M. J. Cell. Sci. 118 (PT 5), 1081-1090 (2005)