

PPIC Antibody (Center)
Affinity Purified Rabbit Polyclonal Antibody (Pab)
Catalog # AP9355C

Specification

PPIC Antibody (Center) - Product Information

| | |
|-------------------|------------------------|
| Application | FC, IHC-P, WB,E |
| Primary Accession | P45877 |
| Other Accession | Q08E11 |
| Reactivity | Human |
| Predicted | Bovine |
| Host | Rabbit |
| Clonality | Polyclonal |
| Isotype | Rabbit IgG |
| Calculated MW | 22763 |
| Antigen Region | 61-89 |

PPIC Antibody (Center) - Additional Information

Gene ID 5480

Other Names

Peptidyl-prolyl cis-trans isomerase C, PPIase C, Cyclophilin C, Rotamase C, PPIC, CYPC

Target/Specificity

This PPIC antibody is generated from rabbits immunized with a KLH conjugated synthetic peptide between 61-89 amino acids from the Central region of human PPIC.

Dilution

FC~~1:10~50

IHC-P~~1:50~100

WB~~1:1000

E~~Use at an assay dependent concentration.

Format

Purified polyclonal antibody supplied in PBS with 0.09% (W/V) sodium azide. This antibody is purified through a protein A column, followed by peptide affinity purification.

Storage

Maintain refrigerated at 2-8°C for up to 2 weeks. For long term storage store at -20°C in small aliquots to prevent freeze-thaw cycles.

Precautions

PPIC Antibody (Center) is for research use only and not for use in diagnostic or therapeutic procedures.

PPIC Antibody (Center) - Protein Information

Name PPIC ([HGNC:9256](#))

Synonyms CYPC

Function PPlase that catalyzes the cis-trans isomerization of proline imidic peptide bonds in oligopeptides and may therefore assist protein folding.

Cellular Location

Cytoplasm {ECO:0000250|UniProtKB:P30412}.

Tissue Location

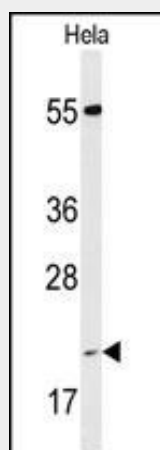
Expressed in kidney, skeletal muscle, pancreas, heart, lung, liver and to a lower extent in brain

PPIC Antibody (Center) - Protocols

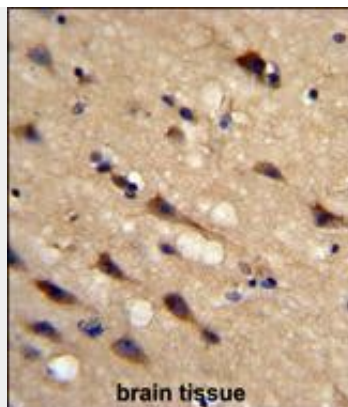
Provided below are standard protocols that you may find useful for product applications.

- [Western Blot](#)
- [Blocking Peptides](#)
- [Dot Blot](#)
- [Immunohistochemistry](#)
- [Immunofluorescence](#)
- [Immunoprecipitation](#)
- [Flow Cytometry](#)
- [Cell Culture](#)

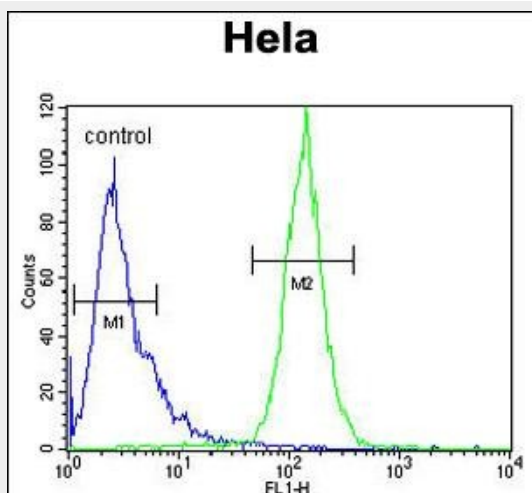
PPIC Antibody (Center) - Images



Western blot analysis of PPIC Antibody (Center) (Cat. #AP9355c) in HeLa cell line lysates (35ug/lane). PPIC (arrow) was detected using the purified Pab.



Formalin-fixed and paraffin-embedded human brain tissue reacted with PPIC Antibody (Center), which was peroxidase-conjugated to the secondary antibody, followed by DAB staining. This data demonstrates the use of this antibody for immunohistochemistry; clinical relevance has not been evaluated.



PPIC Antibody (Center) (Cat. #AP9355c) flow cytometric analysis of Hela cells (right histogram) compared to a negative control cell (left histogram). FITC-conjugated goat-anti-rabbit secondary antibodies were used for the analysis.

PPIC Antibody (Center) - Background

PPIC is a member of the peptidyl-prolyl cis-trans isomerase (PPIase)) family. PPIases catalyze the cis-trans isomerization of proline imidic peptide bonds in oligopeptides and accelerate the folding of proteins. Similar to other PPIases, this protein can bind immunosuppressant cyclosporin A.

PPIC Antibody (Center) - References

- Vasan, R.S. JAMA 302 (2), 168-178 (2009)
- Lim, J. Cell 125 (4), 801-814 (2006)
- Trahey, M. Proc. Natl. Acad. Sci. U.S.A. 96 (6), 3006-3011 (1999)