

TREF1 Antibody (C-term)
Affinity Purified Rabbit Polyclonal Antibody (Pab)
Catalog # AP9356B**Specification**

TREF1 Antibody (C-term) - Product Information

Application	WB, IF, FC,E
Primary Accession	Q96PN7
Reactivity	Human
Host	Rabbit
Clonality	Polyclonal
Isotype	Rabbit IgG
Calculated MW	132256
Antigen Region	1136-1164

TREF1 Antibody (C-term) - Additional Information**Gene ID** 55809**Other Names**

Transcriptional-regulating factor 1, Breast cancer anti-estrogen resistance 2,
Transcriptional-regulating protein 132, Zinc finger protein rapa, Zinc finger transcription factor
TRP-132, TRERF1, BCAR2, RAPA, TREP132

Target/Specificity

This TREF1 antibody is generated from rabbits immunized with a KLH conjugated synthetic peptide between 1136-1164 amino acids from the C-terminal region of human TREF1.

Dilution

WB~~1:1000
IF~~1:10~50
FC~~1:10~50
E~~Use at an assay dependent concentration.

Format

Purified polyclonal antibody supplied in PBS with 0.09% (W/V) sodium azide. This antibody is purified through a protein A column, followed by peptide affinity purification.

Storage

Maintain refrigerated at 2-8°C for up to 2 weeks. For long term storage store at -20°C in small aliquots to prevent freeze-thaw cycles.

Precautions

TREF1 Antibody (C-term) is for research use only and not for use in diagnostic or therapeutic procedures.

TREF1 Antibody (C-term) - Protein Information

Name TRERF1

Synonyms BCAR2, RAPA, TREP132

Function Binds DNA and activates transcription of CYP11A1. Interaction with CREBBP and EP300 results in a synergistic transcriptional activation of CYP11A1.

Cellular Location

Nucleus {ECO:0000255|PROSITE-ProRule:PRU00512, ECO:0000255|PROSITE-ProRule:PRU00624, ECO:0000269|PubMed:11349124, ECO:0000269|PubMed:16371131}

Tissue Location

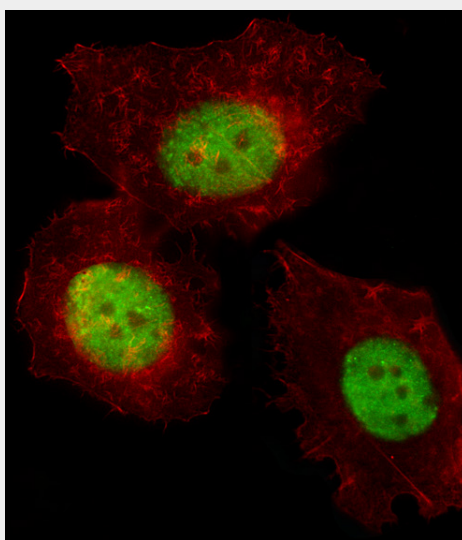
Highest expression was seen in thymus, testis and adrenal cortex, expressed also in the adrenal medulla, thyroid, and stomach. Highly expressed in steroidogenic JEG-3 and MCF-7 cells, low expression was seen in non-steroidogenic Hep-G2 and HEK293 cells

TREF1 Antibody (C-term) - Protocols

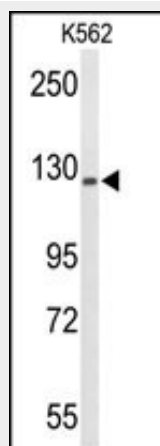
Provided below are standard protocols that you may find useful for product applications.

- [Western Blot](#)
- [Blocking Peptides](#)
- [Dot Blot](#)
- [Immunohistochemistry](#)
- [Immunofluorescence](#)
- [Immunoprecipitation](#)
- [Flow Cytometry](#)
- [Cell Culture](#)

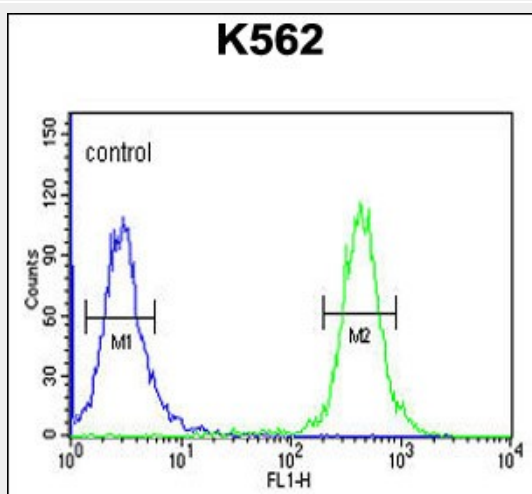
TREF1 Antibody (C-term) - Images



Fluorescent image of MCF-7 cell stained with TREF1 Antibody (C-term)(Cat#AP9356b).MCF-7 cells were fixed with 4% PFA (20 min), permeabilized with Triton X-100 (0.1%, 10 min), then incubated with TREF1 primary antibody (1:25, 1 h at 37°C). For secondary antibody, Alexa Fluor® 488 conjugated donkey anti-rabbit antibody (green) was used (1:400, 50 min at 37°C).Cytoplasmic actin was counterstained with Alexa Fluor® 555 (red) conjugated Phalloidin (7units/ml, 1 h at 37°C).TREF1 immunoreactivity is localized to Nucleus significantly.



Western blot analysis of TREF1 Antibody (C-term) (Cat. #AP9356b) in K562 cell line lysates (35ug/lane). TREF1 (arrow) was detected using the purified Pab.



TREF1 Antibody (C-term) (Cat. #AP9356b) flow cytometric analysis of K562 cells (right histogram) compared to a negative control cell (left histogram). FITC-conjugated goat-anti-rabbit secondary antibodies were used for the analysis.

TREF1 Antibody (C-term) - Background

TREF1 encodes a zinc-finger transcriptional regulating protein which interacts with CBP/p300 to regulate the human gene CYP11A1.

TREF1 Antibody (C-term) - References

- Gizard, F. Mol. Cell. Biol. 26 (20), 7632-7644 (2006)
- Gizard, F. Mol. Cell. Biol. 25 (11), 4335-4348 (2005)
- Beausoleil, S.A. Proc. Natl. Acad. Sci. U.S.A. 101 (33), 12130-12135 (2004)
- Gizard, F. J. Mol. Endocrinol. 32 (2), 557-569 (2004)