

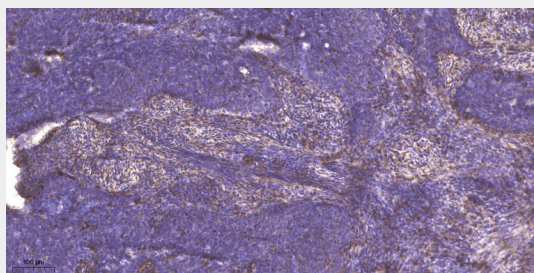
**MYH-pan (Acetyl Lys1394) Rabbit Polyclonal Antibody**  
**MYH-pan (Acetyl Lys1394) Rabbit Polyclonal Antibody**  
**Catalog # AP93577****Specification****MYH-pan (Acetyl Lys1394) Rabbit Polyclonal Antibody - Product Information**

Application	WB, IHC
Primary Accession	<a href="#">P12882/Q9UKX2/P11055/Q9Y623/P13533/P12883/P13535</a>
Reactivity	Rat, Human, Mouse
Host	Polyclonal, Rabbit, IgG
Clonality	Polyclonal

**MYH-pan (Acetyl Lys1394) Rabbit Polyclonal Antibody - Additional Information****Storage Conditions**  
-20°C**MYH-pan (Acetyl Lys1394) Rabbit Polyclonal Antibody - Protein Information****MYH-pan (Acetyl Lys1394) Rabbit Polyclonal Antibody - Protocols**

Provided below are standard protocols that you may find useful for product applications.

- [Western Blot](#)
- [Blocking Peptides](#)
- [Dot Blot](#)
- [Immunohistochemistry](#)
- [Immunofluorescence](#)
- [Immunoprecipitation](#)
- [Flow Cytometry](#)
- [Cell Culture](#)

**MYH-pan (Acetyl Lys1394) Rabbit Polyclonal Antibody - Images**

Immunohistochemical analysis of paraffin-embedded human cervical carcinoma. 1, Antibody was

diluted at 1:200(4° overnight). 2, Tris-EDTA,pH9.0 was used for antigen retrieval. 3,Secondary antibody was diluted at 1:200(room temperature, 45min).

#### **MYH-pan (Acetyl Lys1394) Rabbit Polyclonal Antibody - Background**

Myosin is a major contractile protein which converts chemical energy into mechanical energy through the hydrolysis of ATP. Myosin is a hexameric protein composed of a pair of myosin heavy chains (MYH) and two pairs of nonidentical light chains. Myosin heavy chains are encoded by a multigene family. In mammals at least 10 different myosin heavy chain (MYH) isoforms have been described from striated, smooth, and nonmuscle cells. These isoforms show expression that is spatially and temporally regulated during development. [provided by RefSeq, Jul 2008],