

ASH1L Rabbit Polyclonal Antibody
ASH1L Rabbit Polyclonal Antibody
Catalog # AP93580**Specification**

ASH1L Rabbit Polyclonal Antibody - Product Information

Application	WB
Primary Accession	Q9NR48
Reactivity	Human, Mouse
Host	Polyclonal, Rabbit, IgG
Clonality	Polyclonal
Calculated MW	332790

ASH1L Rabbit Polyclonal Antibody - Additional Information**Gene ID** 55870**Other Names**

Histone-lysine N-methyltransferase ASH1L, 2.1.1.359, 2.1.1.367, ASH1-like protein, huASH1, Absent small and homeotic disks protein 1 homolog, Lysine N-methyltransferase 2H, ASH1L, KIAA1420, KMT2H

Storage Conditions

-20°C

ASH1L Rabbit Polyclonal Antibody - Protein Information**Name** ASH1L**Synonyms** KIAA1420, KMT2H**Function**

Histone methyltransferase specifically trimethylating 'Lys- 36' of histone H3 forming H3K36me3 (PubMed:21239497). Also monomethylates 'Lys-9' of histone H3 (H3K9me1) in vitro (By similarity). The physiological significance of the H3K9me1 activity is unclear (By similarity).

Cellular Location

Nucleus. Cell junction, tight junction. Chromosome. Note=The relevance of tight junction localization is however unclear.

Tissue Location

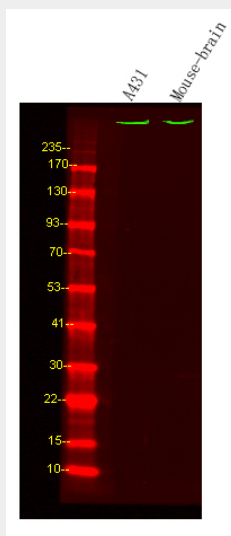
Widely expressed, with highest level in brain, heart and kidney.

ASH1L Rabbit Polyclonal Antibody - Protocols

Provided below are standard protocols that you may find useful for product applications.

- [Western Blot](#)
- [Blocking Peptides](#)
- [Dot Blot](#)
- [Immunohistochemistry](#)
- [Immunofluorescence](#)
- [Immunoprecipitation](#)
- [Flow Cytometry](#)
- [Cell Culture](#)

ASH1L Rabbit Polyclonal Antibody - Images



Western Blot analysis of A431 and mouse brain lysis, using primary antibody at 1:1000 dilution. Secondary antibody was diluted at 1:10000