

Rac1/CDC42 (Phospho Ser71) Rabbit Polyclonal Antibody
Rac1/CDC42 (Phospho Ser71) Rabbit Polyclonal Antibody
Catalog # AP93583**Specification**

Rac1/CDC42 (Phospho Ser71) Rabbit Polyclonal Antibody - Product Information

Application	WB, IHC, E
Primary Accession	P63000/P15153/P60763/P60953
Reactivity	Rat, Human, Mouse
Clonality	Polyclonal

Rac1/CDC42 (Phospho Ser71) Rabbit Polyclonal Antibody - Additional Information**Dilution**

WB~~1:1000
IHC~~1:100~500
E~~N/A

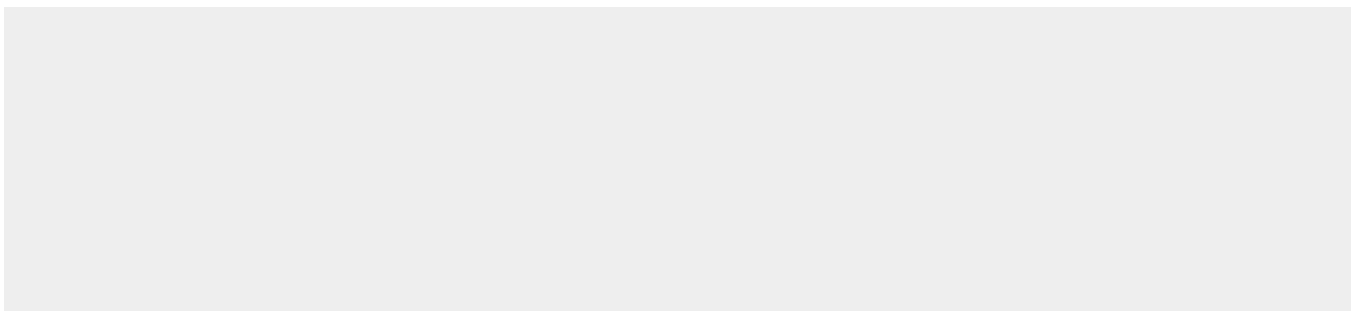
Storage Conditions

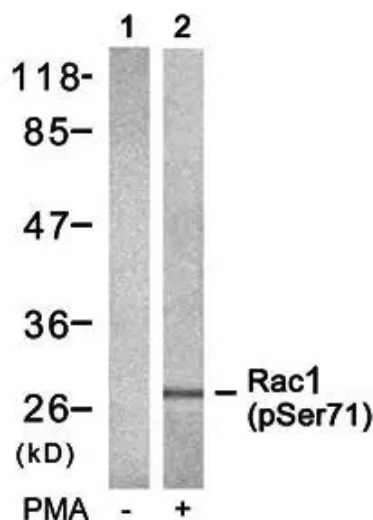
-20°C

Rac1/CDC42 (Phospho Ser71) Rabbit Polyclonal Antibody - Protein Information**Rac1/CDC42 (Phospho Ser71) Rabbit Polyclonal Antibody - Protocols**

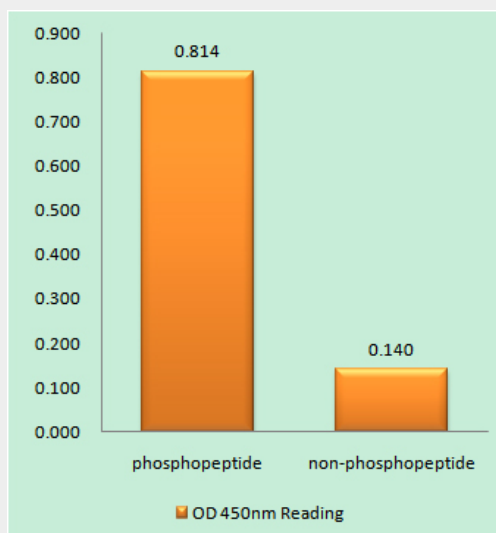
Provided below are standard protocols that you may find useful for product applications.

- [Western Blot](#)
- [Blocking Peptides](#)
- [Dot Blot](#)
- [Immunohistochemistry](#)
- [Immunofluorescence](#)
- [Immunoprecipitation](#)
- [Flow Cytometry](#)
- [Cell Culture](#)

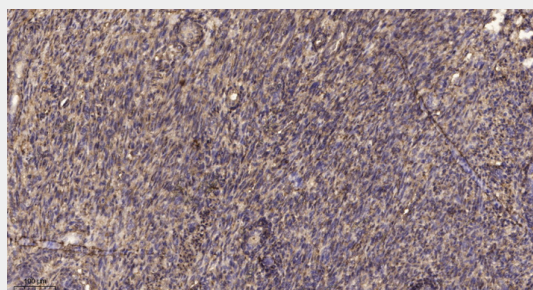
Rac1/CDC42 (Phospho Ser71) Rabbit Polyclonal Antibody - Images



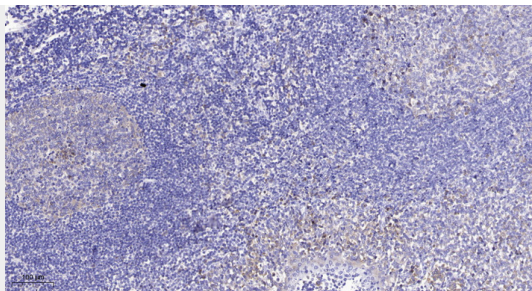
Western blot analysis of Rac1(Phospho-Ser71) antibody in 293 cells lysates, cell treated or untreated with PMA 125ng/ml 30', 4° over night, secondary antibody was diluted at 1:10000, 37° 1 hour.



Enzyme-Linked Immunosorbent Assay (Phospho-ELISA) for Immunogen Phosphopeptide (Phospho-left) and Non-Phosphopeptide (Phospho-right), using Rac1(Phospho-Ser71) antibody



Immunohistochemical analysis of paraffin-embedded human uterus. 1, Antibody was diluted at 1:200(4° overnight). 2, Tris-EDTA,pH9.0 was used for antigen retrieval. 3,Secondary antibody was diluted at 1:200(room temperature, 45min).



Immunohistochemical analysis of paraffin-embedded human tonsil. 1, Antibody was diluted at 1:200(4° overnight). 2, Tris-EDTA,pH9.0 was used for antigen retrieval. 3,Secondary antibody was diluted at 1:200(room temperature, 45min).