

Histone H1 (Phospho Thr3) Rabbit Polyclonal Antibody

Histone H1 (Phospho Thr3) Rabbit Polyclonal Antibody

Catalog # AP93604

Specification

Histone H1 (Phospho Thr3) Rabbit Polyclonal Antibody - Product Information

Application	WB
Primary Accession	O02539/P16403/P16402/P10412
Reactivity	Rat, Human, Mouse
Clonality	Polyclonal

Histone H1 (Phospho Thr3) Rabbit Polyclonal Antibody - Additional Information

Storage Conditions

-20°C

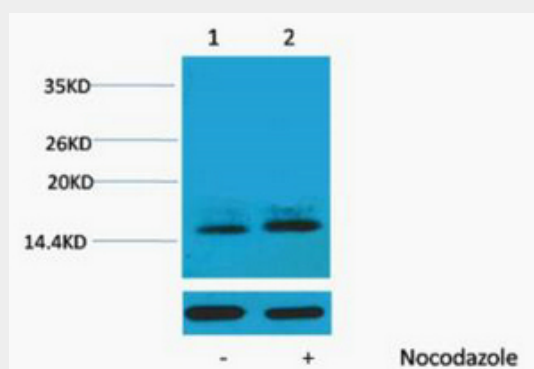
Histone H1 (Phospho Thr3) Rabbit Polyclonal Antibody - Protein Information

Histone H1 (Phospho Thr3) Rabbit Polyclonal Antibody - Protocols

Provided below are standard protocols that you may find useful for product applications.

- [Western Blot](#)
- [Blocking Peptides](#)
- [Dot Blot](#)
- [Immunohistochemistry](#)
- [Immunofluorescence](#)
- [Immunoprecipitation](#)
- [Flow Cytometry](#)
- [Cell Culture](#)

Histone H1 (Phospho Thr3) Rabbit Polyclonal Antibody - Images



Western blot analysis of extracts from Hela cells, untreated (-) or treated, 1:5000. Secondary antibody was diluted at 1:20000

Histone H1 (Phospho Thr3) Rabbit Polyclonal Antibody - Background

Histones are basic nuclear proteins responsible for nucleosome structure of the chromosomal fiber in eukaryotes. Two molecules of each of the four core histones (H2A, H2B, H3, and H4) form an octamer, around which approximately 146 bp of DNA is wrapped in repeating units, called nucleosomes. The linker histone, H1, interacts with linker DNA between nucleosomes and functions in the compaction of chromatin into higher order structures. This gene is intronless and encodes a replication-dependent histone that is a member of the histone H1 family. Transcripts from this gene lack polyA tails but instead contain a palindromic termination element. This gene is found in the large histone gene cluster on chromosome 6. [provided by RefSeq, Aug 2015],