

**Ctcf1 (1L13) Rat Monoclonal Antibody**  
**Ctcf1 (1L13) Rat Monoclonal Antibody**  
**Catalog # AP93633****Specification**

---

**Ctcf1 (1L13) Rat Monoclonal Antibody - Product Information**

|                   |                        |
|-------------------|------------------------|
| Application       | WB                     |
| Primary Accession | <a href="#">A2APF3</a> |
| Reactivity        | Mouse                  |
| Clonality         | Monoclonal             |
| Calculated MW     | 73108                  |

**Ctcf1 (1L13) Rat Monoclonal Antibody - Additional Information****Gene ID** 664799**Other Names**

Transcriptional repressor CTCFL, Brother of the regulator of imprinted sites, CCCTC-binding factor, CTCF paralog, CTCF-like protein, Ctcf1, Boris

**Dilution**

WB~~1:1000

**Storage Conditions**

-20°C

**Ctcf1 (1L13) Rat Monoclonal Antibody - Protein Information****Name** Ctcf1**Synonyms** Boris**Function**

Testis-specific DNA binding protein responsible for insulator function, nuclear architecture and transcriptional control, which probably acts by recruiting epigenetic chromatin modifiers. Plays a key role in gene imprinting in male germline, by participating in the establishment of differential methylation at the IGF2/H19 imprinted control region (ICR). Directly binds the unmethylated H19 ICR and recruits the PRMT7 methyltransferase, leading to methylate histone H4 'Arg-3' to form H4R3sme2. This probably leads to recruit de novo DNA methyltransferases at these sites. Seems to act as tumor suppressor. In association with DNMT1 and DNMT3B, involved in activation of BAG1 gene expression by binding to its promoter. Required for dimethylation of H3 lysine 4 (H3K4me2) of MYC and BRCA1 promoters.

**Cellular Location**

Cytoplasm. Nucleus

**Tissue Location**

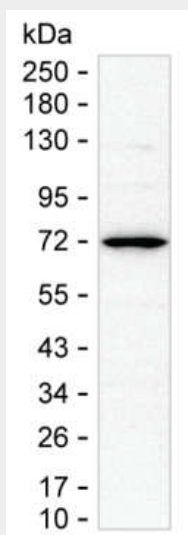
Testis-specific..

## Ctcf1 (1L13) Rat Monoclonal Antibody - Protocols

Provided below are standard protocols that you may find useful for product applications.

- [Western Blot](#)
- [Blocking Peptides](#)
- [Dot Blot](#)
- [Immunohistochemistry](#)
- [Immunofluorescence](#)
- [Immunoprecipitation](#)
- [Flow Cytometry](#)
- [Cell Culture](#)

## Ctcf1 (1L13) Rat Monoclonal Antibody - Images



15 µg of mouse testis tissue lysate was run on 6-18% SDS-PAGE under reducing conditions and blotted onto nitrocellulose membrane. AP93633 at 1 µg/mL was used as the primary antibody and peroxidase conjugated goat anti-rat IgG was used as the secondary antibody. CTCFL band was visualized using ECL Substrate. Result: AP93633 can detect mouse CTCFL by Western blotting.