

MCM2 (1K1) Rabbit Monoclonal Antibody
MCM2 (1K1) Rabbit Monoclonal Antibody
Catalog # AP93651**Specification**

MCM2 (1K1) Rabbit Monoclonal Antibody - Product Information

Application	WB, IHC, IF, FC, ICC
Primary Accession	P49736
Reactivity	Rat, Human, Mouse
Clonality	Monoclonal
Calculated MW	101896

MCM2 (1K1) Rabbit Monoclonal Antibody - Additional Information**Gene ID** 4171**Other Names**

DNA replication licensing factor MCM2, 3.6.4.12, Minichromosome maintenance protein 2 homolog, Nuclear protein BM28, MCM2 ([hgnc_id=6944](http://www.genenames.org/cgi-bin/gene_symbol_report?hgnc_id=6944))

Dilution

WB~~1:1000
IHC~~1:100~500
IF~~1:50~200
FC~~1:10~50
ICC~~N/A

Storage Conditions

-20°C

MCM2 (1K1) Rabbit Monoclonal Antibody - Protein Information**Name** MCM2 ([HGNC:6944](#))**Function**

Acts as a component of the MCM2-7 complex (MCM complex) which is the replicative helicase essential for 'once per cell cycle' DNA replication initiation and elongation in eukaryotic cells. Core component of CDC45-MCM-GINS (CMG) helicase, the molecular machine that unwinds template DNA during replication, and around which the replisome is built (PubMed:[32453425](http://www.uniprot.org/citations/32453425), PubMed:[34694004](http://www.uniprot.org/citations/34694004), PubMed:[34700328](http://www.uniprot.org/citations/34700328), PubMed:[35585232](http://www.uniprot.org/citations/35585232)). The active ATPase sites in the MCM2-7 ring are formed through the interaction surfaces of two neighboring subunits such that a critical structure of a conserved arginine finger motif is provided in trans relative to the ATP-binding site of the Walker A box of the adjacent subunit. The six ATPase active

sites, however, are likely to contribute differentially to the complex helicase activity (PubMed:32453425). Required for the entry in S phase and for cell division (PubMed:8175912). Plays a role in terminally differentiated hair cells development of the cochlea and induces cells apoptosis (PubMed:26196677).

Cellular Location

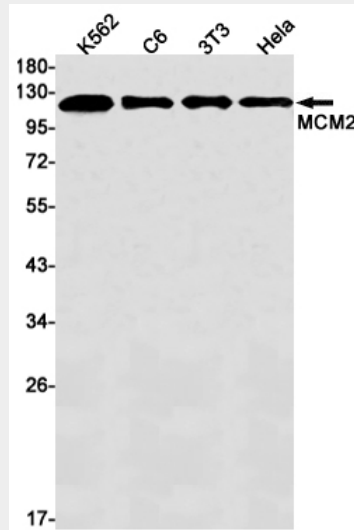
Nucleus. Chromosome. Note=Associated with chromatin before the formation of nuclei and detaches from it as DNA replication progresses. {ECO:0000250|UniProtKB:P55861}

MCM2 (1K1) Rabbit Monoclonal Antibody - Protocols

Provided below are standard protocols that you may find useful for product applications.

- [Western Blot](#)
- [Blocking Peptides](#)
- [Dot Blot](#)
- [Immunohistochemistry](#)
- [Immunofluorescence](#)
- [Immunoprecipitation](#)
- [Flow Cytometry](#)
- [Cell Culture](#)

MCM2 (1K1) Rabbit Monoclonal Antibody - Images



Western blot detection of MCM2 in K562,C6,3T3,HeLa cell lysates using MCM2 antibody(1:1000 diluted).