

CD45 (15N7) Rabbit Monoclonal Antibody
CD45 (15N7) Rabbit Monoclonal Antibody
Catalog # AP93656**Specification**

CD45 (15N7) Rabbit Monoclonal Antibody - Product Information

Application	WB, IHC, IF, FC, ICC
Primary Accession	P08575
Reactivity	Human
Clonality	Monoclonal
Calculated MW	147486

CD45 (15N7) Rabbit Monoclonal Antibody - Additional Information**Gene ID** 5788**Other Names**

Receptor-type tyrosine-protein phosphatase C, 3.1.3.48, Leukocyte common antigen, L-CA, T200, CD45, PTPRC ([HGNC:9666](http://www.genenames.org/cgi-bin/gene_symbol_report?hgnc_id=9666)), CD45

Dilution

WB~~1:1000
IHC~~1:100~500
IF~~1:50~200
FC~~1:10~50
ICC~~N/A

Storage Conditions

-20°C

CD45 (15N7) Rabbit Monoclonal Antibody - Protein Information**Name** PTPRC ([HGNC:9666](#))**Synonyms** CD45**Function**

Protein tyrosine-protein phosphatase required for T-cell activation through the antigen receptor (PubMed:[35767951](http://www.uniprot.org/citations/35767951)). Acts as a positive regulator of T-cell coactivation upon binding to DPP4. The first PTPase domain has enzymatic activity, while the second one seems to affect the substrate specificity of the first one. Upon T-cell activation, recruits and dephosphorylates SKAP1 and FYN. Dephosphorylates LYN, and thereby modulates LYN activity (By similarity). Interacts with CLEC10A at antigen presenting cell-T cell contact; CLEC10A on immature dendritic cells recognizes Tn antigen- carrying PTPRC/CD45 receptor on effector T cells and modulates T cell activation threshold to limit autoreactivity.

Cellular Location

Cell membrane; Single-pass type I membrane protein. Membrane raft. Synapse. Note=Colocalized with DPP4 in membrane rafts.

Tissue Location

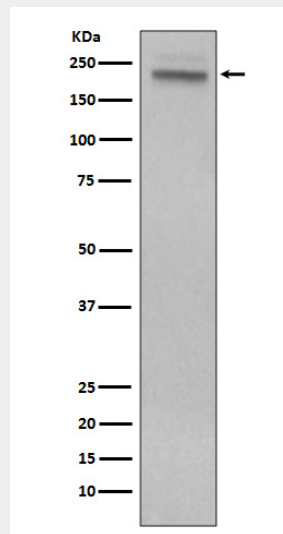
Isoform 1: Detected in thymocytes. Isoform 2: Detected in thymocytes. Isoform 3: Detected in thymocytes. Isoform 4: Not detected in thymocytes. Isoform 5: Detected in thymocytes. Isoform 6: Not detected in thymocytes. Isoform 7: Detected in thymocytes Isoform 8: Not detected in thymocytes.

CD45 (15N7) Rabbit Monoclonal Antibody - Protocols

Provided below are standard protocols that you may find useful for product applications.

- [Western Blot](#)
- [Blocking Peptides](#)
- [Dot Blot](#)
- [Immunohistochemistry](#)
- [Immunofluorescence](#)
- [Immunoprecipitation](#)
- [Flow Cytometry](#)
- [Cell Culture](#)

CD45 (15N7) Rabbit Monoclonal Antibody - Images



Western blot analysis of CD45 expression in Jurkat cell lysate.