

Cytokeratin 19 (8L9) Rabbit Monoclonal Antibody
Cytokeratin 19 (8L9) Rabbit Monoclonal Antibody
Catalog # AP93657**Specification**

Cytokeratin 19 (8L9) Rabbit Monoclonal Antibody - Product Information

Application	WB, IHC, IF, ICC
Primary Accession	P08727
Reactivity	Human, Mouse
Clonality	Monoclonal
Calculated MW	44106

Cytokeratin 19 (8L9) Rabbit Monoclonal Antibody - Additional Information**Gene ID** 3880**Other Names**

Keratin, type I cytoskeletal 19, Cytokeratin-19, CK-19, Keratin-19, K19, KRT19

DilutionWB~~1:1000
IHC~~1:100~500
IF~~1:50~200
ICC~~N/A**Storage Conditions**

-20°C

Cytokeratin 19 (8L9) Rabbit Monoclonal Antibody - Protein Information**Name** KRT19**Function**

Involved in the organization of myofibers. Together with KRT8, helps to link the contractile apparatus to dystrophin at the costameres of striated muscle.

Tissue Location

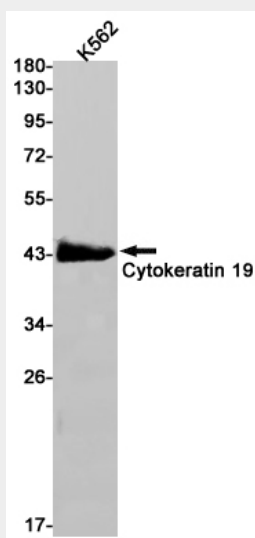
Expressed in a defined zone of basal keratinocytes in the deep outer root sheath of hair follicles. Also observed in sweat gland and mammary gland ductal and secretory cells, bile ducts, gastrointestinal tract, bladder urothelium, oral epithelia, esophagus, ectocervical epithelium (at protein level). Expressed in epidermal basal cells, in nipple epidermis and a defined region of the hair follicle. Also seen in a subset of vascular wall cells in both the veins and artery of human umbilical cord, and in umbilical cord vascular smooth muscle. Observed in muscle fibers accumulating in the costameres of myoplasm at the sarcolemma in structures that contain dystrophin and spectrin.

Cytokeratin 19 (8L9) Rabbit Monoclonal Antibody - Protocols

Provided below are standard protocols that you may find useful for product applications.

- [Western Blot](#)
- [Blocking Peptides](#)
- [Dot Blot](#)
- [Immunohistochemistry](#)
- [Immunofluorescence](#)
- [Immunoprecipitation](#)
- [Flow Cytometry](#)
- [Cell Culture](#)

Cytokeratin 19 (8L9) Rabbit Monoclonal Antibody - Images



Western blot detection of Cytokeratin 19 in K562 cell lysates using Cytokeratin 19 antibody(1:1000 diluted).