

DUSP6 (9T14) Rabbit Monoclonal Antibody
DUSP6 (9T14) Rabbit Monoclonal Antibody
Catalog # AP93669**Specification**

DUSP6 (9T14) Rabbit Monoclonal Antibody - Product Information

Application	WB, IHC, IF, FC, ICC, IP
Primary Accession	Q16828
Reactivity	Rat, Human, Mouse
Clonality	Monoclonal
Calculated MW	42320

DUSP6 (9T14) Rabbit Monoclonal Antibody - Additional Information**Gene ID** 1848**Other Names**

Dual specificity protein phosphatase 6, 3.1.3.16, 3.1.3.48, Dual specificity protein phosphatase PYST1, Mitogen-activated protein kinase phosphatase 3, MAP kinase phosphatase 3, MKP-3, DUSP6, MKP3, PYST1

Dilution

WB~~1:1000
IHC~~1:100~500
IF~~1:50~200
FC~~1:10~50
ICC~~N/A
IP~~N/A

Storage Conditions

-20°C

DUSP6 (9T14) Rabbit Monoclonal Antibody - Protein Information**Name** DUSP6**Synonyms** MKP3, PYST1**Function**

Dual specificity protein phosphatase, which mediates dephosphorylation and inactivation of MAP kinases (PubMed:8670865). Has a specificity for the ERK family (PubMed:8670865). Plays an important role in alleviating chronic postoperative pain (By similarity). Necessary for the normal dephosphorylation of the long-lasting phosphorylated forms of spinal MAPK1/3 and MAP kinase p38 induced by peripheral surgery, which drives the resolution of acute postoperative allodynia (By similarity). Also important for dephosphorylation of MAPK1/3 in local wound tissue, which further contributes to resolution of acute pain (By similarity). Promotes cell differentiation by regulating

MAPK1/MAPK3 activity and regulating the expression of AP1 transcription factors (PubMed:29043977).

Cellular Location

Cytoplasm.

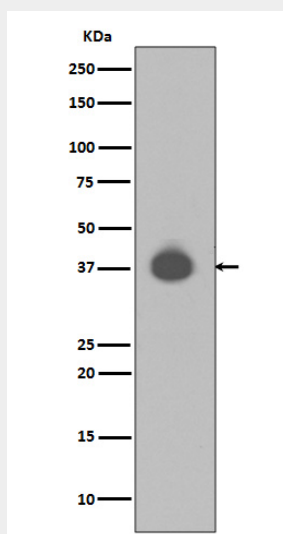
Tissue Location

Expressed in keratinocytes (at protein level).

DUSP6 (9T14) Rabbit Monoclonal Antibody - Protocols

Provided below are standard protocols that you may find useful for product applications.

- [Western Blot](#)
- [Blocking Peptides](#)
- [Dot Blot](#)
- [Immunohistochemistry](#)
- [Immunofluorescence](#)
- [Immunoprecipitation](#)
- [Flow Cytometry](#)
- [Cell Culture](#)

DUSP6 (9T14) Rabbit Monoclonal Antibody - Images

Western blot analysis of DUSP6 expression in NIH/3T3 cell lysate.