

T150A Antibody (Center)
Affinity Purified Rabbit Polyclonal Antibody (Pab)
Catalog # AP9366c**Specification**

T150A Antibody (Center) - Product Information

Application	FC, IHC-P, WB,E
Primary Accession	Q86TG1
Other Accession	Q91WN2
Reactivity	Human
Predicted	Mouse
Host	Rabbit
Clonality	Polyclonal
Isotype	Rabbit IgG
Antigen Region	81-108

T150A Antibody (Center) - Additional Information**Gene ID** 129303**Other Names**

Transmembrane protein 150A, Transmembrane protein 150, TMEM150A, TMEM150

Target/Specificity

This T150A antibody is generated from rabbits immunized with a KLH conjugated synthetic peptide between 81-108 amino acids from the Central region of human T150A.

Dilution

FC~~1:10~50

IHC-P~~1:50~100

WB~~1:1000

E~~Use at an assay dependent concentration.

Format

Purified polyclonal antibody supplied in PBS with 0.09% (W/V) sodium azide. This antibody is purified through a protein A column, followed by peptide affinity purification.

Storage

Maintain refrigerated at 2-8°C for up to 2 weeks. For long term storage store at -20°C in small aliquots to prevent freeze-thaw cycles.

Precautions

T150A Antibody (Center) is for research use only and not for use in diagnostic or therapeutic procedures.

T150A Antibody (Center) - Protein Information**Name** TMEM150A

Synonyms TMEM150

Function Regulates localization of phosphatidylinositol 4-kinase (PI4K) to the plasma membrane, possibly by reducing the association of TTC7 (TTC7A or TTC7B) with the PI4K complex (PubMed:[25608530](#)). Acts as a regulator of phosphatidylinositol 4-phosphate (PtdIns(4)P) synthesis (PubMed:[25608530](#)). May also play a role in fasting-induced catabolism (By similarity).

Cellular Location

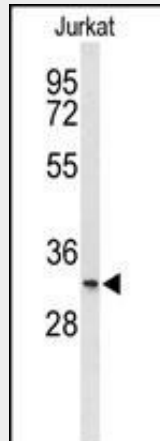
Cell membrane; Multi-pass membrane protein Note=Localizes mainly at the plasma membrane; only a minor fraction localizes on intracellular structures (PubMed:25608530)

T150A Antibody (Center) - Protocols

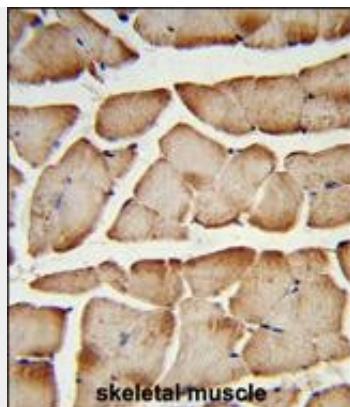
Provided below are standard protocols that you may find useful for product applications.

- [Western Blot](#)
- [Blocking Peptides](#)
- [Dot Blot](#)
- [Immunohistochemistry](#)
- [Immunofluorescence](#)
- [Immunoprecipitation](#)
- [Flow Cytometry](#)
- [Cell Culture](#)

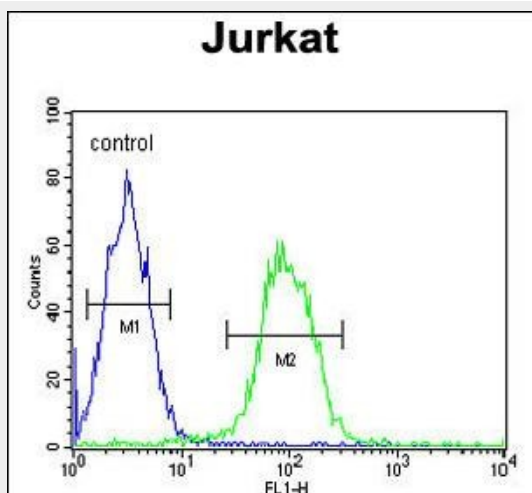
T150A Antibody (Center) - Images



Western blot analysis of T150A Antibody (Center) (Cat. #AP9366c) in Jurkat cell line lysates (35ug/lane). T150A (arrow) was detected using the purified Pab.



Formalin-fixed and paraffin-embedded human skeletal muscle reacted with T150A Antibody (Center), which was peroxidase-conjugated to the secondary antibody, followed by DAB staining. This data demonstrates the use of this antibody for immunohistochemistry; clinical relevance has not been evaluated.



T150A Antibody (Center) (Cat. #AP9366c) flow cytometric analysis of Jurkat cells (right histogram) compared to a negative control cell (left histogram). FITC-conjugated goat-anti-rabbit secondary antibodies were used for the analysis.

T150A Antibody (Center) - Background

T150A is possible role in fasting-induced catabolism.

T150A Antibody (Center) - References

Zhang, J. Biochim. Biophys. Acta 1492 (1), 280-284 (2000)