

**E2F2 (6C14) Rabbit Monoclonal Antibody**  
**E2F2 (6C14) Rabbit Monoclonal Antibody**  
**Catalog # AP93674****Specification**

---

**E2F2 (6C14) Rabbit Monoclonal Antibody - Product Information**

Application	WB, FC
Primary Accession	<a href="#">Q14209</a>
Reactivity	Rat, Human, Mouse
Clonality	Monoclonal
Calculated MW	47506

**E2F2 (6C14) Rabbit Monoclonal Antibody - Additional Information****Gene ID** 1870**Other Names**

Transcription factor E2F2, E2F-2, E2F2

**Dilution**

WB~~1:1000

FC~~1:10~50

**Storage Conditions**

-20°C

**E2F2 (6C14) Rabbit Monoclonal Antibody - Protein Information****Name** E2F2**Function**

Transcription activator that binds DNA cooperatively with DP proteins through the E2 recognition site, 5'-TTTC[CG]CGC-3' found in the promoter region of a number of genes whose products are involved in cell cycle regulation or in DNA replication. The DRTF1/E2F complex functions in the control of cell-cycle progression from g1 to s phase. E2F2 binds specifically to RB1 in a cell-cycle dependent manner.

**Cellular Location**

Nucleus.

**Tissue Location**

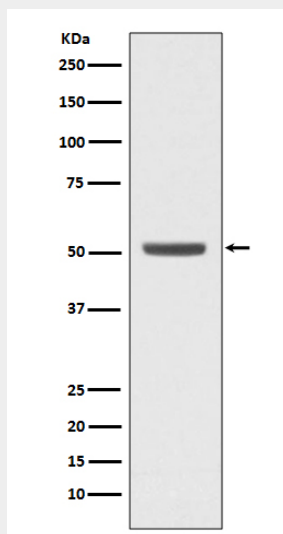
Highest level of expression is found in placenta, low levels are found in lung. Found as well in many immortalized cell lines derived from tumor samples

**E2F2 (6C14) Rabbit Monoclonal Antibody - Protocols**

Provided below are standard protocols that you may find useful for product applications.

- [Western Blot](#)
- [Blocking Peptides](#)
- [Dot Blot](#)
- [Immunohistochemistry](#)
- [Immunofluorescence](#)
- [Immunoprecipitation](#)
- [Flow Cytometry](#)
- [Cell Culture](#)

#### **E2F2 (6C14) Rabbit Monoclonal Antibody - Images**



Western blot analysis of E2F2 expression in K562 cell lysate.