

Phospho-Hsp27 (S78) (6L19) Rabbit Monoclonal Antibody
Phospho-Hsp27 (S78) (6L19) Rabbit Monoclonal Antibody
Catalog # AP93692**Specification**

Phospho-Hsp27 (S78) (6L19) Rabbit Monoclonal Antibody - Product Information

Application	WB, IHC, IF, ICC, IP
Primary Accession	P04792
Reactivity	Human
Clonality	Monoclonal
Calculated MW	22783

Phospho-Hsp27 (S78) (6L19) Rabbit Monoclonal Antibody - Additional Information**Gene ID** 3315**Other Names**

Heat shock protein beta-1, HspB1, 28 kDa heat shock protein, Estrogen-regulated 24 kDa protein, Heat shock 27 kDa protein, HSP 27, Heat shock protein family B member 1, Stress-responsive protein 27, SRP27, HSPB1, HSP27, HSP28

Dilution

WB~~1:1000
IHC~~1:100~500
IF~~1:50~200
ICC~~N/A
IP~~N/A

Storage Conditions

-20°C

Phospho-Hsp27 (S78) (6L19) Rabbit Monoclonal Antibody - Protein Information**Name** HSPB1**Synonyms** HSP27, HSP28**Function**

Small heat shock protein which functions as a molecular chaperone probably maintaining denatured proteins in a folding- competent state (PubMed:10383393, PubMed:20178975). Plays a role in stress resistance and actin organization (PubMed:19166925). Through its molecular chaperone activity may regulate numerous biological processes including the phosphorylation and the axonal transport of neurofilament proteins (PubMed:23728742).

Cellular Location

Cytoplasm. Nucleus Cytoplasm, cytoskeleton, spindle Note=Cytoplasmic in interphase cells. Colocalizes with mitotic spindles in mitotic cells. Translocates to the nucleus during heat shock and resides in sub-nuclear structures known as SC35 speckles or nuclear splicing speckles.

Tissue Location

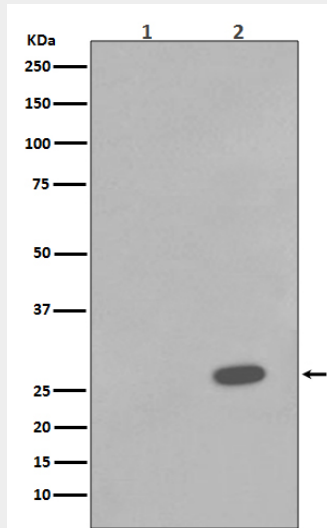
Detected in all tissues tested: skeletal muscle, heart, aorta, large intestine, small intestine, stomach, esophagus, bladder, adrenal gland, thyroid, pancreas, testis, adipose tissue, kidney, liver, spleen, cerebral cortex, blood serum and cerebrospinal fluid. Highest levels are found in the heart and in tissues composed of striated and smooth muscle.

Phospho-Hsp27 (S78) (6L19) Rabbit Monoclonal Antibody - Protocols

Provided below are standard protocols that you may find useful for product applications.

- [Western Blot](#)
- [Blocking Peptides](#)
- [Dot Blot](#)
- [Immunohistochemistry](#)
- [Immunofluorescence](#)
- [Immunoprecipitation](#)
- [Flow Cytometry](#)
- [Cell Culture](#)

Phospho-Hsp27 (S78) (6L19) Rabbit Monoclonal Antibody - Images



Western blot analysis of Phospho-Hsp27 (S78) expression in (1) A431 cell lysate; (2) A431 cell lysate treated with Anisomycin.