

CD163 (103) Rabbit Monoclonal Antibody
CD163 (103) Rabbit Monoclonal Antibody
Catalog # AP93697**Specification**

CD163 (103) Rabbit Monoclonal Antibody - Product Information

| | |
|-------------------|------------------------|
| Application | WB, IHC, IP |
| Primary Accession | Q86VB7 |
| Reactivity | Human |
| Clonality | Monoclonal |
| Calculated MW | 125451 |

CD163 (103) Rabbit Monoclonal Antibody - Additional Information**Gene ID** 9332**Other Names**

Scavenger receptor cysteine-rich type 1 protein M130, Hemoglobin scavenger receptor, CD163, Soluble CD163, sCD163, CD163, M130

Dilution

WB~~1:1000
IHC~~1:100~500
IP~~N/A

Storage Conditions

-20°C

CD163 (103) Rabbit Monoclonal Antibody - Protein Information**Name** CD163**Synonyms** M130**Function**

Acute phase-regulated receptor involved in clearance and endocytosis of hemoglobin/haptoglobin complexes by macrophages and may thereby protect tissues from free hemoglobin-mediated oxidative damage. May play a role in the uptake and recycling of iron, via endocytosis of hemoglobin/haptoglobin and subsequent breakdown of heme. Binds hemoglobin/haptoglobin complexes in a calcium-dependent and pH- dependent manner. Exhibits a higher affinity for complexes of hemoglobin and multimeric haptoglobin of HP*1F phenotype than for complexes of hemoglobin and dimeric haptoglobin of HP*1S phenotype. Induces a cascade of intracellular signals that involves tyrosine kinase-dependent calcium mobilization, inositol triphosphate production and secretion of IL6 and CSF1. Isoform 3 exhibits the higher capacity for ligand endocytosis and the more pronounced surface expression when expressed in cells.

Cellular Location

[Soluble CD163]: Secreted

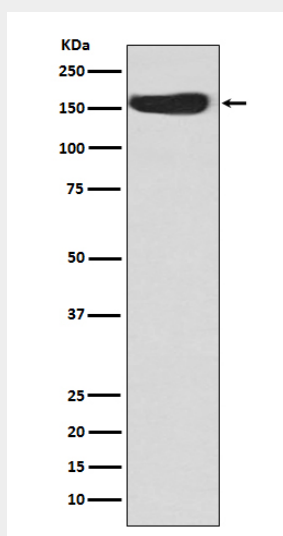
Tissue Location

Expressed in monocytes and mature macrophages such as Kupffer cells in the liver, red pulp macrophages in the spleen, cortical macrophages in the thymus, resident bone marrow macrophages and meningeal macrophages of the central nervous system. Expressed also in blood. Isoform 1 is the lowest abundant in the blood. Isoform 2 is the lowest abundant in the liver and the spleen. Isoform 3 is the predominant isoform detected in the blood

CD163 (103) Rabbit Monoclonal Antibody - Protocols

Provided below are standard protocols that you may find useful for product applications.

- [Western Blot](#)
- [Blocking Peptides](#)
- [Dot Blot](#)
- [Immunohistochemistry](#)
- [Immunofluorescence](#)
- [Immunoprecipitation](#)
- [Flow Cytometry](#)
- [Cell Culture](#)

CD163 (103) Rabbit Monoclonal Antibody - Images

Western blot analysis of CD163 expression in Human fetal kidney lysate.