

**MCM10 Rabbit Polyclonal Antibody**  
**MCM10 Rabbit Polyclonal Antibody**  
**Catalog # AP93711****Specification**

---

**MCM10 Rabbit Polyclonal Antibody - Product Information**

Application	WB, IHC
Primary Accession	<a href="#">Q7L590</a>
Reactivity	Human, Mouse
Clonality	Polyclonal
Calculated MW	98183

**MCM10 Rabbit Polyclonal Antibody - Additional Information****Gene ID** 55388**Other Names**

Protein MCM10 homolog, HsMCM10, MCM10

**Dilution**WB~~1:1000  
IHC~~1:100~500**Storage Conditions**

-20°C

**MCM10 Rabbit Polyclonal Antibody - Protein Information****Name** MCM10**Function**

Acts as a replication initiation factor that brings together the MCM2-7 helicase and the DNA polymerase alpha/primase complex in order to initiate DNA replication. Additionally, plays a role in preventing DNA damage during replication. Key effector of the RBBP6 and ZBTB38-mediated regulation of DNA-replication and common fragile sites stability; acts as a direct target of transcriptional repression by ZBTB38 (PubMed:<a href="http://www.uniprot.org/citations/24726359" target="\_blank">24726359</a>).

**Cellular Location**

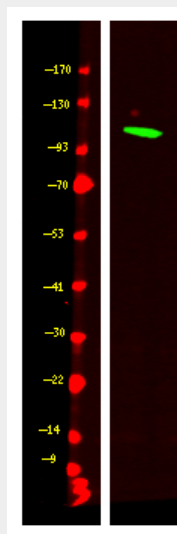
Nucleus Note=Colocalizes with ORC2 in nuclei foci. Associated with chromatin in S phase. From early to mid-S phase located in discrete nuclear foci. In early S phase, several hundred foci appeared throughout the nucleus. In mid-S phase, the foci appeared at the nuclear periphery and nucleolar regions. In the late S and G phases localized to nucleoli

**MCM10 Rabbit Polyclonal Antibody - Protocols**

Provided below are standard protocols that you may find useful for product applications.

- [Western Blot](#)
- [Blocking Peptides](#)
- [Dot Blot](#)
- [Immunohistochemistry](#)
- [Immunofluorescence](#)
- [Immunoprecipitation](#)
- [Flow Cytometry](#)
- [Cell Culture](#)

#### **MCM10 Rabbit Polyclonal Antibody - Images**



Western Blot analysis of Hela cell lysis, using primary antibody at 1:1000 dilution. Secondary antibody was diluted at 1:10000