

ALOX15 (19A1) Rabbit Monoclonal Antibody
ALOX15 (19A1) Rabbit Monoclonal Antibody
Catalog # AP93717**Specification**

ALOX15 (19A1) Rabbit Monoclonal Antibody - Product Information

Application	WB, IHC, IF, ICC
Primary Accession	P16050 , P39654 , Q02759
Reactivity	Rat, Human, Mouse
Clonality	Monoclonal

ALOX15 (19A1) Rabbit Monoclonal Antibody - Additional Information**Dilution**

WB~~1:1000
IHC~~1:100~500
IF~~1:50~200
ICC~~N/A

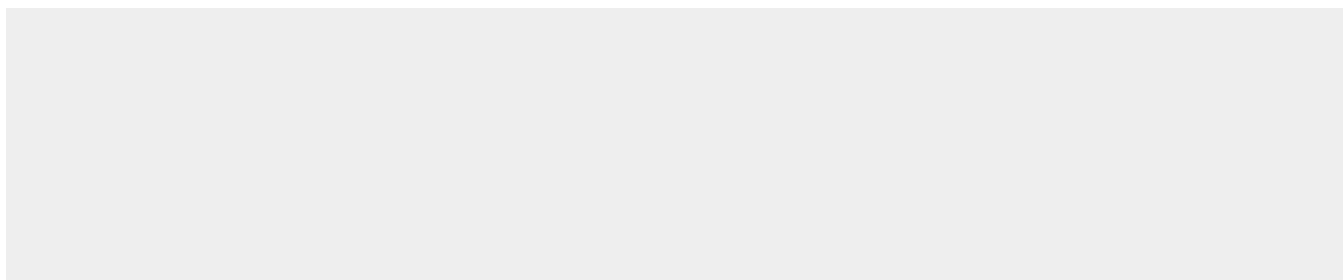
Storage Conditions

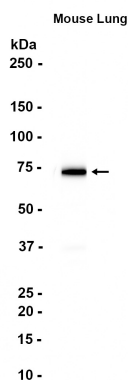
-20°C

ALOX15 (19A1) Rabbit Monoclonal Antibody - Protein Information**ALOX15 (19A1) Rabbit Monoclonal Antibody - Protocols**

Provided below are standard protocols that you may find useful for product applications.

- [Western Blot](#)
- [Blocking Peptides](#)
- [Dot Blot](#)
- [Immunohistochemistry](#)
- [Immunofluorescence](#)
- [Immunoprecipitation](#)
- [Flow Cytometry](#)
- [Cell Culture](#)

ALOX15 (19A1) Rabbit Monoclonal Antibody - Images



Western blot analysis of extracts from Mouse lung tissue using AP93717 at 1:1000.

ALOX15 (19A1) Rabbit Monoclonal Antibody - Background

This gene encodes a member of the lipoxygenase family of proteins. The encoded enzyme acts on various polyunsaturated fatty acid substrates to generate various bioactive lipid mediators such as eicosanoids, hepoxilins, lipoxins, and other molecules. The encoded enzyme and its reaction products have been shown to regulate inflammation and immunity. Multiple pseudogenes of this gene have been identified in the human genome. [provided by RefSeq, Aug 2017]