

**SMARCC2/BAF170 (11S2) Rabbit Monoclonal Antibody**  
**SMARCC2/BAF170 (11S2) Rabbit Monoclonal Antibody**  
**Catalog # AP93727****Specification**

---

**SMARCC2/BAF170 (11S2) Rabbit Monoclonal Antibody - Product Information**

Application	WB, IHC, IF, FC, ICC, IP
Primary Accession	<a href="#">Q8TAQ2</a> , <a href="#">Q6PDG5</a>
Reactivity	Rat, Human, Mouse
Clonality	Monoclonal

**SMARCC2/BAF170 (11S2) Rabbit Monoclonal Antibody - Additional Information****Dilution**

WB~~1:1000  
IHC~~1:100~500  
IF~~1:50~200  
FC~~1:10~50  
ICC~~N/A  
IP~~N/A

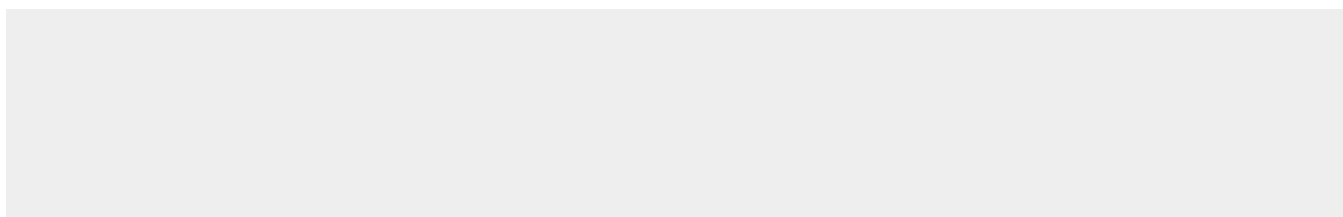
**Storage Conditions**

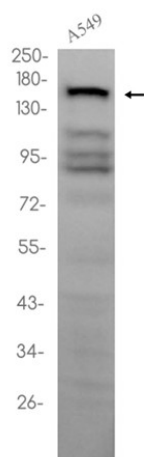
-20°C

**SMARCC2/BAF170 (11S2) Rabbit Monoclonal Antibody - Protein Information****SMARCC2/BAF170 (11S2) Rabbit Monoclonal Antibody - Protocols**

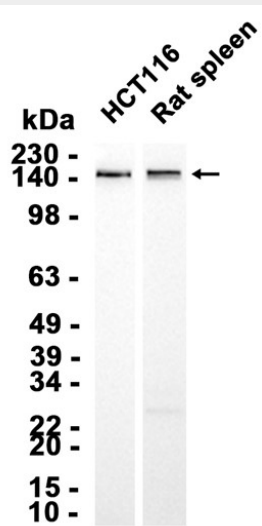
Provided below are standard protocols that you may find useful for product applications.

- [Western Blot](#)
- [Blocking Peptides](#)
- [Dot Blot](#)
- [Immunohistochemistry](#)
- [Immunofluorescence](#)
- [Immunoprecipitation](#)
- [Flow Cytometry](#)
- [Cell Culture](#)

**SMARCC2/BAF170 (11S2) Rabbit Monoclonal Antibody - Images**



Western blot analysis of extracts from A549 cells using AP93727 at 1:1000.



Western blot analysis of extracts from HCT116 cells and Rat spleen tissue using AP93727 at 1:1000.

### SMARCC2/BAF170 (11S2) Rabbit Monoclonal Antibody - Background

The protein encoded by this gene is a member of the SWI/SNF family of proteins, whose members display helicase and ATPase activities and which are thought to regulate transcription of certain genes by altering the chromatin structure around those genes. The encoded protein is part of the large ATP-dependent chromatin remodeling complex SNF/SWI and contains a predicted leucine zipper motif typical of many transcription factors. Alternatively spliced transcript variants encoding different isoforms have been found for this gene. [provided by RefSeq, Jul 2008]