

Filamin C (9L15) Rabbit Monoclonal Antibody
Filamin C (9L15) Rabbit Monoclonal Antibody
Catalog # AP93814**Specification**

Filamin C (9L15) Rabbit Monoclonal Antibody - Product Information

Application	WB, IHC
Primary Accession	Q14315
Reactivity	Human
Clonality	Monoclonal
Calculated MW	291022

Filamin C (9L15) Rabbit Monoclonal Antibody - Additional Information**Gene ID** 2318**Other Names**

Filamin-C, FLN-C, FLNc, ABP-280-like protein, ABP-L, Actin-binding-like protein, Filamin-2, Gamma-filamin, FLNC, ABPL, FLN2

Storage Conditions

-20°C

Filamin C (9L15) Rabbit Monoclonal Antibody - Protein Information**Name** FLNC**Synonyms** ABPL, FLN2**Function**

Muscle-specific filamin, which plays a central role in sarcomere assembly and organization (PubMed:34405687). Critical for normal myogenesis, it probably functions as a large actin-cross-linking protein with structural functions at the Z lines in muscle cells. May be involved in reorganizing the actin cytoskeleton in response to signaling events (By similarity).

Cellular Location

Cytoplasm. Membrane; Peripheral membrane protein. Cytoplasm, cytoskeleton. Cytoplasm, myofibril, sarcomere, Z line. Note=A small amount localizes at membranes. In striated muscle cells, it predominantly localizes in myofibrillar Z lines, while a minor fraction localizes with subsarcolemme. Targeting to developing and mature Z lines is mediated by the intradomain insert

Tissue Location

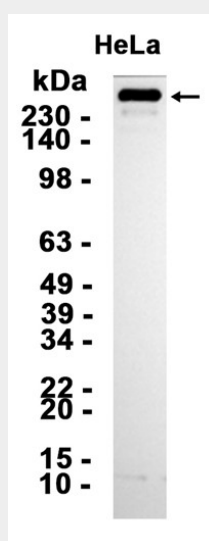
Highly expressed in striated muscles. Weakly expressed in thyroid, fetal brain, fetal lung, retina, spinal cord and bone marrow. Not expressed in testis, pancreas, adrenal gland, placenta, liver and kidney.

Filamin C (9L15) Rabbit Monoclonal Antibody - Protocols

Provided below are standard protocols that you may find useful for product applications.

- [Western Blot](#)
- [Blocking Peptides](#)
- [Dot Blot](#)
- [Immunohistochemistry](#)
- [Immunofluorescence](#)
- [Immunoprecipitation](#)
- [Flow Cytometry](#)
- [Cell Culture](#)

Filamin C (9L15) Rabbit Monoclonal Antibody - Images



Western blot analysis of extracts from HeLa cells using AP93814 at 1:5000.

Filamin C (9L15) Rabbit Monoclonal Antibody - Background

This gene encodes one of three related filamin genes, specifically gamma filamin. These filamin proteins crosslink actin filaments into orthogonal networks in cortical cytoplasm and participate in the anchoring of membrane proteins for the actin cytoskeleton. Three functional domains exist in filamin: an N-terminal filamentous actin-binding domain, a C-terminal self-association domain, and a membrane glycoprotein-binding domain. Two transcript variants encoding different isoforms have been found for this gene. [provided by RefSeq, Jul 2008]