

CD105 (14B19) Rabbit Monoclonal Antibody
CD105 (14B19) Rabbit Monoclonal Antibody
Catalog # AP93819**Specification**

CD105 (14B19) Rabbit Monoclonal Antibody - Product Information

Application	WB, IHC, IF, FC, ICC, IP
Primary Accession	Q63961
Reactivity	Mouse
Clonality	Monoclonal
Calculated MW	70021

CD105 (14B19) Rabbit Monoclonal Antibody - Additional Information**Gene ID** 13805**Other Names**

Endoglin, Cell surface MJ7/18 antigen, CD105, Eng, Edg

DilutionWB~~1:1000
IHC~~1:100~500
IF~~1:50~200
FC~~1:10~50
ICC~~N/A
IP~~N/A**Storage Conditions**

-20°C

CD105 (14B19) Rabbit Monoclonal Antibody - Protein Information**Name** Eng**Synonyms** Edg**Function**

Vascular endothelium glycoprotein that plays an important role in the regulation of angiogenesis (PubMed:10625534). Required for normal structure and integrity of adult vasculature (By similarity). Regulates the migration of vascular endothelial cells (PubMed:17540773). Required for normal extraembryonic angiogenesis and for embryonic heart development (PubMed:10625534). May regulate endothelial cell shape changes in response to blood flow, which drive vascular remodeling and establishment of normal vascular morphology during angiogenesis (PubMed:28530658). May play a role in the binding of endothelial cells to integrins. Acts as a TGF-beta coreceptor and is involved in

the TGF-beta/BMP signaling cascade that ultimately leads to the activation of SMAD transcription factors (PubMed:23300529). Required for GDF2/BMP9 signaling through SMAD1 in endothelial cells and modulates TGFB1 signaling through SMAD3 (By similarity).

Cellular Location

Cell membrane; Single-pass type I membrane protein

Tissue Location

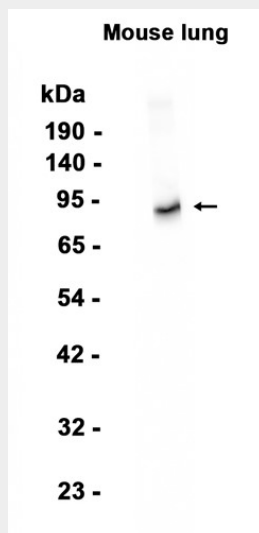
Detected on blood vessels (at protein level) (PubMed:8194490). Detected on adult pulmonary artery, capillaries supporting the heart muscle and lung alveolar capillary endothelial cells (PubMed:10625534). Endoglin is restricted to endothelial cells in all tissues except bone marrow and is also found in stromal cells within the connective tissue of intestine, stomach, heart, skeletal muscle, uterus, ovary, oviduct, testis and thymus (PubMed:8194490)

CD105 (14B19) Rabbit Monoclonal Antibody - Protocols

Provided below are standard protocols that you may find useful for product applications.

- [Western Blot](#)
- [Blocking Peptides](#)
- [Dot Blot](#)
- [Immunohistochemistry](#)
- [Immunofluorescence](#)
- [Immunoprecipitation](#)
- [Flow Cytometry](#)
- [Cell Culture](#)

CD105 (14B19) Rabbit Monoclonal Antibody - Images



Western blot analysis of extracts from Mouse lung tissue using AP93819 at 1:1000.

CD105 (14B19) Rabbit Monoclonal Antibody - Background

Vascular endothelium glycoprotein that plays an important role in the regulation of angiogenesis (PubMed:10625534). Required for normal structure and integrity of adult vasculature (By similarity). Regulates the migration of vascular endothelial cells (PubMed:17540773). Required for normal

extraembryonic angiogenesis and for embryonic heart development (PubMed:10625534). May regulate endothelial cell shape changes in response to blood flow, which drive vascular remodeling and establishment of normal vascular morphology during angiogenesis (PubMed:28530658).