

CD163 (12S15) Rabbit Monoclonal Antibody
CD163 (12S15) Rabbit Monoclonal Antibody
Catalog # AP93832**Specification**

CD163 (12S15) Rabbit Monoclonal Antibody - Product Information

Application	WB, IHC
Primary Accession	Q2VLH6
Reactivity	Rat, Human, Mouse
Clonality	Monoclonal
Calculated MW	120921

CD163 (12S15) Rabbit Monoclonal Antibody - Additional Information**Gene ID** 93671**Other Names**

Scavenger receptor cysteine-rich type 1 protein M130, CD163, Soluble CD163, sCD163, Cd163, M130

DilutionWB~~1:1000
IHC~~1:100~500**Storage Conditions**

-20°C

CD163 (12S15) Rabbit Monoclonal Antibody - Protein Information**Name** Cd163**Synonyms** M130**Function**

Involved in clearance and endocytosis of hemoglobin/haptoglobin complexes by macrophages and may thereby protect tissues from free hemoglobin-mediated oxidative damage. May play a role in the uptake and recycling of iron, via endocytosis of hemoglobin/haptoglobin and subsequent breakdown of heme. Binds hemoglobin/haptoglobin complexes in a calcium-dependent and pH-dependent manner. Induces a cascade of intracellular signals that involves tyrosine kinase-dependent calcium mobilization, inositol triphosphate production and secretion of IL6 and CSF1 (By similarity).

Cellular Location

[Soluble CD163]: Secreted {ECO:0000250|UniProtKB:Q86VB7}

Tissue Location

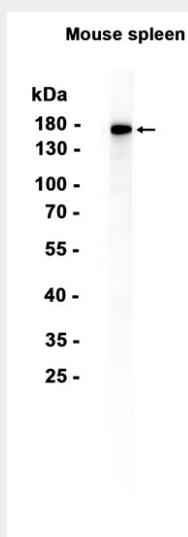
Expressed in monocytes and mature macrophages such as Kupffer cells in the liver, red pulp macrophages in the spleen and mesenteric lymph nodes.

CD163 (12S15) Rabbit Monoclonal Antibody - Protocols

Provided below are standard protocols that you may find useful for product applications.

- [Western Blot](#)
- [Blocking Peptides](#)
- [Dot Blot](#)
- [Immunohistochemistry](#)
- [Immunofluorescence](#)
- [Immunoprecipitation](#)
- [Flow Cytometry](#)
- [Cell Culture](#)

CD163 (12S15) Rabbit Monoclonal Antibody - Images



Western blot analysis of extracts from Mouse spleen tissue using AP93832 at 1:1000.

CD163 (12S15) Rabbit Monoclonal Antibody - Background

Involved in clearance and endocytosis of hemoglobin/haptoglobin complexes by macrophages and may thereby protect tissues from free hemoglobin-mediated oxidative damage. May play a role in the uptake and recycling of iron, via endocytosis of hemoglobin/haptoglobin and subsequent breakdown of heme. Binds hemoglobin/haptoglobin complexes in a calcium-dependent and pH-dependent manner. Induces a cascade of intracellular signals that involves tyrosine kinase-dependent calcium mobilization, inositol triphosphate production and secretion of IL6 and CSF1 (By similarity).