

**LELP1 (14H2) Mouse Monoclonal antibody**  
**LELP1 (14H2) Mouse Monoclonal antibody**  
**Catalog # AP93848****Specification**

---

**LELP1 (14H2) Mouse Monoclonal antibody - Product Information**

Application	WB, IHC
Primary Accession	<a href="#">Q5T871</a>
Reactivity	Human
Clonality	Monoclonal
Calculated MW	10697

**LELP1 (14H2) Mouse Monoclonal antibody - Additional Information****Gene ID** 149018**Other Names**

Late cornified envelope-like proline-rich protein 1, Novel small proline-rich protein, LELP1

**Dilution**

WB~~1:1000

IHC~~1:100~500

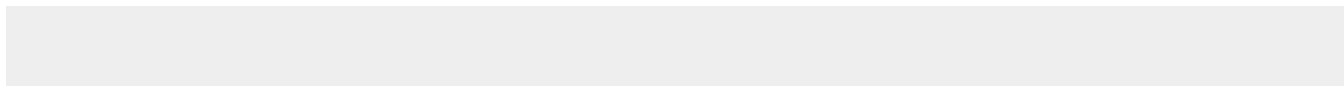
**Storage Conditions**

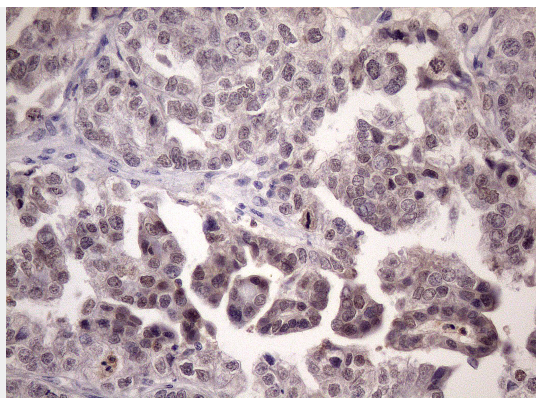
-20°C

**LELP1 (14H2) Mouse Monoclonal antibody - Protein Information****Name** LELP1**LELP1 (14H2) Mouse Monoclonal antibody - Protocols**

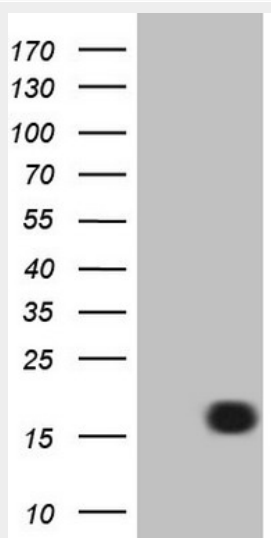
Provided below are standard protocols that you may find useful for product applications.

- [Western Blot](#)
- [Blocking Peptides](#)
- [Dot Blot](#)
- [Immunohistochemistry](#)
- [Immunofluorescence](#)
- [Immunoprecipitation](#)
- [Flow Cytometry](#)
- [Cell Culture](#)

**LELP1 (14H2) Mouse Monoclonal antibody - Images**



Immunohistochemical staining of paraffin-embedded Adenocarcinoma of Human ovary tissue using anti-LELP1 mouse monoclonal antibody. (Heat-induced epitope retrieval by 1mM EDTA in 10mM Tris buffer (pH8.5) at 120°C for 3min, AP93848) (1:150)



HEK293T cells were transfected with the pCMV6-ENTRY control (Left lane) or pCMV6-ENTRY LELP1 (Right lane) cDNA for 48 hrs and lysed. Equivalent amounts of cell lysates (5 ug per lane) were separated by SDS-PAGE and immunoblotted with anti-LELP1 (Cat# AP93848)(1:2000). Positive lysates (100ug) and (20ug) can be purchased separately from biodragon.