

PPP3R2 Antibody (N-term)
Affinity Purified Rabbit Polyclonal Antibody (Pab)
Catalog # AP9384a

Specification

PPP3R2 Antibody (N-term) - Product Information

Application	FC, IHC-P, WB,E
Primary Accession	O96LZ3
Reactivity	Human, Mouse
Host	Rabbit
Clonality	Polyclonal
Isotype	Rabbit IgG
Calculated MW	19533
Antigen Region	3-29

PPP3R2 Antibody (N-term) - Additional Information

Gene ID 5535

Other Names

Calcineurin subunit B type 2, Calcineurin B-like protein, CBLP, Calcineurin BII, CNBII, PPP3R1-like, Protein phosphatase 2B regulatory subunit 2, Protein phosphatase 3 regulatory subunit B beta isoform, PPP3R2, CBLP, PPP3RL

Target/Specificity

This PPP3R2 antibody is generated from rabbits immunized with a KLH conjugated synthetic peptide between 3-29 amino acids from the N-terminal region of human PPP3R2.

Dilution

FC~~1:10~50

IHC-P~~1:50~100

WB~~1:1000

E~~Use at an assay dependent concentration.

Format

Purified polyclonal antibody supplied in PBS with 0.09% (W/V) sodium azide. This antibody is purified through a protein A column, followed by peptide affinity purification.

Storage

Maintain refrigerated at 2-8°C for up to 2 weeks. For long term storage store at -20°C in small aliquots to prevent freeze-thaw cycles.

Precautions

PPP3R2 Antibody (N-term) is for research use only and not for use in diagnostic or therapeutic procedures.

PPP3R2 Antibody (N-term) - Protein Information

Name PPP3R2

Synonyms CBLP, PPP3RL

Function Regulatory subunit of calcineurin, a calcium-dependent, calmodulin stimulated protein phosphatase. Confers calcium sensitivity.

Cellular Location

Mitochondrion {ECO:0000250|UniProtKB:Q63811}. Note=Localizes in the mitochondria in a SPATA33-dependent manner {ECO:0000250|UniProtKB:Q63811}

Tissue Location

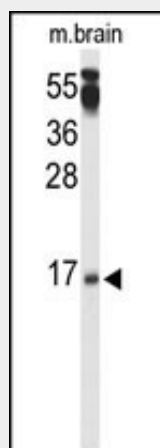
Testis-specific..

PPP3R2 Antibody (N-term) - Protocols

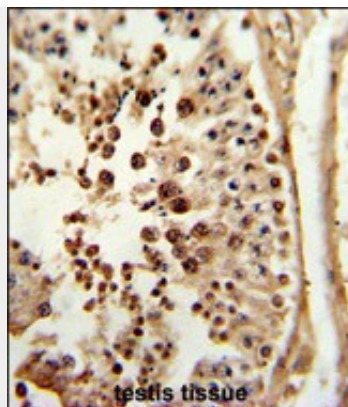
Provided below are standard protocols that you may find useful for product applications.

- [Western Blot](#)
- [Blocking Peptides](#)
- [Dot Blot](#)
- [Immunohistochemistry](#)
- [Immunofluorescence](#)
- [Immunoprecipitation](#)
- [Flow Cytometry](#)
- [Cell Culture](#)

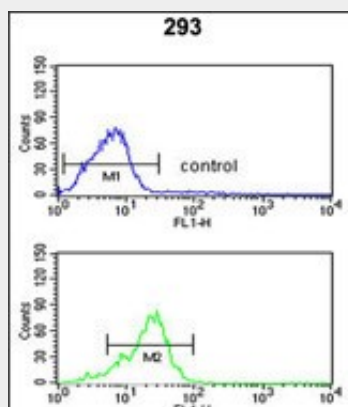
PPP3R2 Antibody (N-term) - Images



Western blot analysis of PPP3R2 Antibody (N-term) (Cat. #AP9384a) in mouse brain tissue lysates (35ug/lane). PPP3R2 (arrow) was detected using the purified Pab.



Formalin-fixed and paraffin-embedded human testis tissue reacted with PPP3R2 Antibody (N-term), which was peroxidase-conjugated to the secondary antibody, followed by DAB staining. This data demonstrates the use of this antibody for immunohistochemistry; clinical relevance has not been evaluated.



PPP3R2 Antibody (N-term) (Cat. #AP9384a) flow cytometric analysis of 293 cells (bottom histogram) compared to a negative control cell (top histogram). FITC-conjugated goat-anti-rabbit secondary antibodies were used for the analysis.

PPP3R2 Antibody (N-term) - Background

PPP3R2 is regulatory subunit of calcineurin, a calcium-dependent, calmodulin stimulated protein phosphatase. This protein confers calcium sensitivity (By similarity).

PPP3R2 Antibody (N-term) - References

- He, Z.H., et al. Eur. J. Appl. Physiol. (2010) In press :
- Need, A.C., et al. Eur. J. Hum. Genet. 17(7):946-957(2009)
- Chow, R., et al. Biochem. Biophys. Res. Commun. 363(3):506-512(2007)
- Saeki, M., et al. J. Biol. Chem. 282(16):11786-11794(2007)