

HDHD1 (18L10) Mouse Monoclonal antibody
HDHD1 (18L10) Mouse Monoclonal antibody
Catalog # AP93865**Specification**

HDHD1 (18L10) Mouse Monoclonal antibody - Product Information

Application	WB, IHC
Primary Accession	Q08623
Reactivity	Human
Clonality	Monoclonal
Calculated MW	25249

HDHD1 (18L10) Mouse Monoclonal antibody - Additional Information**Gene ID** 8226**Other Names**

Pseudouridine-5'-phosphatase {ECO:0000312|HGNC:HGNC:16818}, 3.1.3.96, Haloacid dehalogenase-like hydrolase domain-containing protein 1, Haloacid dehalogenase-like hydrolase domain-containing protein 1A, Protein GS1, Pseudouridine-5'-monophosphatase, 5'-PsiMPase, PUDP (HGNC:16818)

Dilution

WB~~1:1000
IHC~~1:100~500

Storage Conditions

-20°C

HDHD1 (18L10) Mouse Monoclonal antibody - Protein Information**Name** PUDP ([HGNC:16818](#))**Function**

Dephosphorylates pseudouridine 5'-phosphate, a potential intermediate in rRNA degradation. Pseudouridine is then excreted intact in urine.

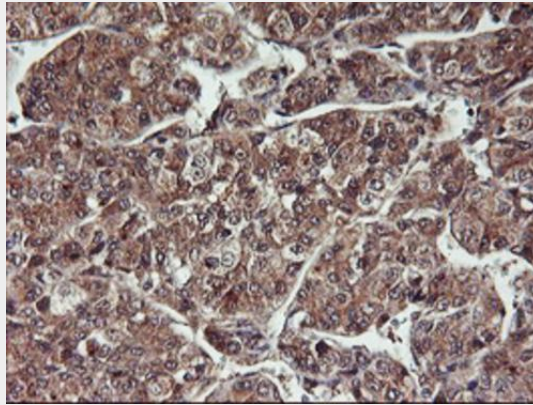
HDHD1 (18L10) Mouse Monoclonal antibody - Protocols

Provided below are standard protocols that you may find useful for product applications.

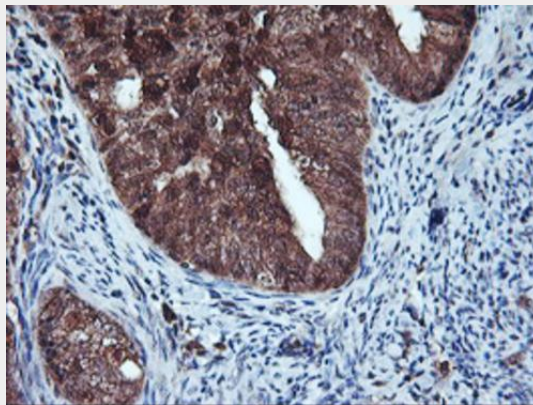
- [Western Blot](#)
- [Blocking Peptides](#)
- [Dot Blot](#)
- [Immunohistochemistry](#)

- [Immunofluorescence](#)
- [Immunoprecipitation](#)
- [Flow Cytometry](#)
- [Cell Culture](#)

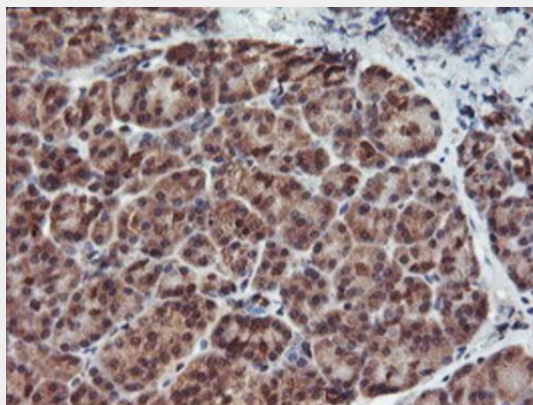
HDHD1 (18L10) Mouse Monoclonal antibody - Images



Immunohistochemical staining of paraffin-embedded Carcinoma of Human liver tissue using anti-HDHD1 mouse monoclonal antibody. (Heat-induced epitope retrieval by 10mM citric buffer, pH6.0, 100°C for 10min, AP93865)

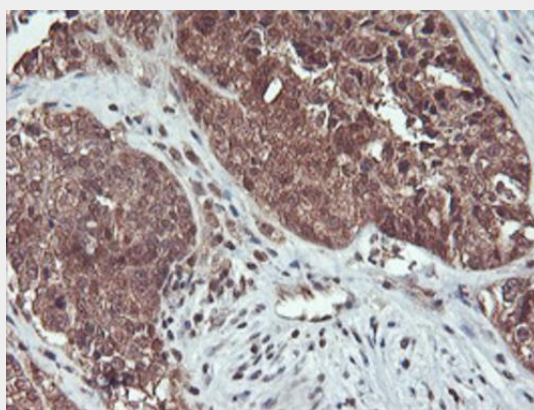


Immunohistochemical staining of paraffin-embedded Adenocarcinoma of Human endometrium tissue using anti-HDHD1 mouse monoclonal antibody. (Heat-induced epitope retrieval by 10mM citric buffer, pH6.0, 100°C for 10min, AP93865)

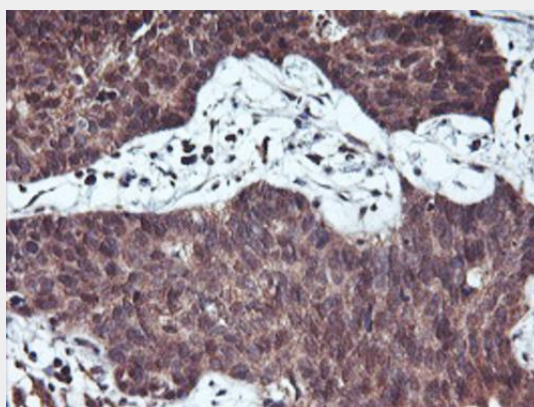


Immunohistochemical staining of paraffin-embedded Human pancreas tissue within the normal limits using anti-HDHD1 mouse monoclonal antibody. (Heat-induced epitope retrieval by 10mM

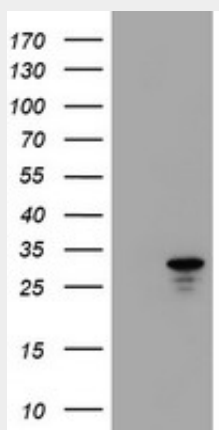
citric buffer, pH6.0, 100°C for 10min, AP93865)



Immunohistochemical staining of paraffin-embedded Adenocarcinoma of Human ovary tissue using anti-HDHD1 mouse monoclonal antibody. (Heat-induced epitope retrieval by 10mM citric buffer, pH6.0, 100°C for 10min, AP93865)



Immunohistochemical staining of paraffin-embedded Carcinoma of Human lung tissue using anti-HDHD1 mouse monoclonal antibody. (Heat-induced epitope retrieval by 10mM citric buffer, pH6.0, 100°C for 10min, AP93865)



HEK293T cells were transfected with the pCMV6-ENTRY control (Left lane) or pCMV6-ENTRY HDHD1 (Right lane) cDNA for 48 hrs and lysed. Equivalent amounts of cell lysates (5 ug per lane) were separated by SDS-PAGE and immunoblotted with anti-HDHD1. Positive lysates (100ug) and (20ug) can be purchased separately from biodragon.

HDHD1 (18L10) Mouse Monoclonal antibody - Background

This gene encodes a member of the haloacid dehalogenase-like (HAD) hydrolase superfamily. The encoded protein has no known biological function. This gene has a pseudogene on chromosome 1. Multiple alternatively spliced transcript variants encoding different isoforms have been identified. [provided by RefSeq]