

**HDHD1 (5Z16) Mouse Monoclonal antibody**  
**HDHD1 (5Z16) Mouse Monoclonal antibody**  
**Catalog # AP93866****Specification**

---

**HDHD1 (5Z16) Mouse Monoclonal antibody - Product Information**

Application	WB, IHC
Primary Accession	<a href="#">Q08623</a>
Reactivity	Rat, Human, Mouse, Monkey, Dog
Clonality	Monoclonal
Calculated MW	25249

**HDHD1 (5Z16) Mouse Monoclonal antibody - Additional Information****Gene ID** 8226**Other Names**

Pseudouridine-5'-phosphatase {ECO:0000312|HGNC:HGNC:16818}, 3.1.3.96, Haloacid dehalogenase-like hydrolase domain-containing protein 1, Haloacid dehalogenase-like hydrolase domain-containing protein 1A, Protein GS1, Pseudouridine-5'-monophosphatase, 5'-PsiMPase, PUDP ([http://www.genenames.org/cgi-bin/gene\\_symbol\\_report?hgnc\\_id=16818](http://www.genenames.org/cgi-bin/gene_symbol_report?hgnc_id=16818))

**Dilution**

WB~~1:1000  
IHC~~1:100~500

**Storage Conditions**

-20°C

**HDHD1 (5Z16) Mouse Monoclonal antibody - Protein Information****Name** PUDP ([HGNC:16818](#))**Function**

Dephosphorylates pseudouridine 5'-phosphate, a potential intermediate in rRNA degradation. Pseudouridine is then excreted intact in urine.

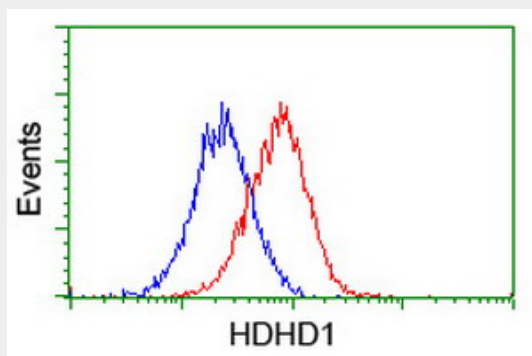
**HDHD1 (5Z16) Mouse Monoclonal antibody - Protocols**

Provided below are standard protocols that you may find useful for product applications.

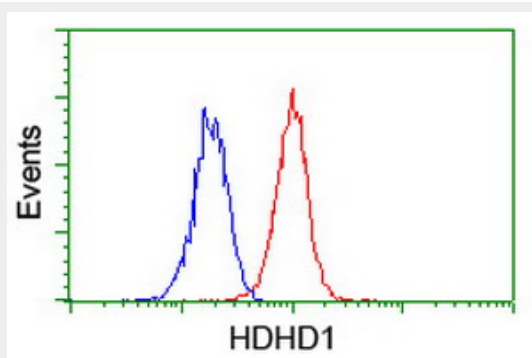
- [Western Blot](#)
- [Blocking Peptides](#)
- [Dot Blot](#)
- [Immunohistochemistry](#)

- [Immunofluorescence](#)
- [Immunoprecipitation](#)
- [Flow Cytometry](#)
- [Cell Culture](#)

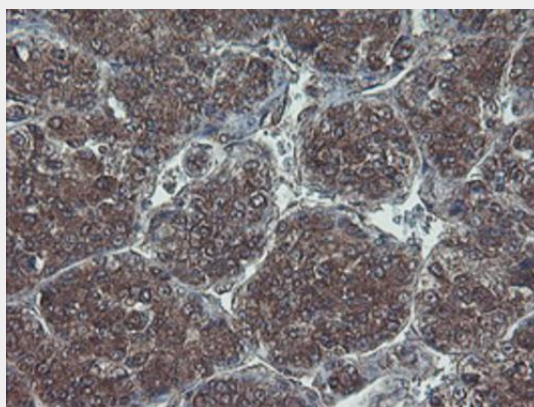
### HDHD1 (5Z16) Mouse Monoclonal antibody - Images



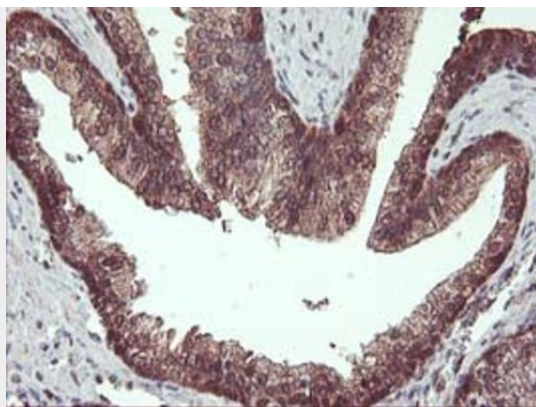
Flow cytometric Analysis of HeLa cells, using anti-HDHD1 antibody (AP93866), (Red), compared to a nonspecific negative control antibody, (Blue).



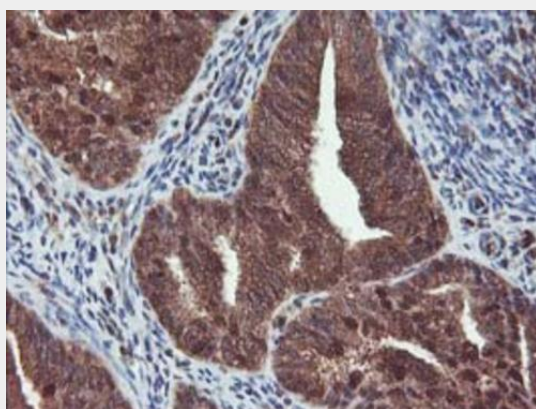
Flow cytometric Analysis of Jurkat cells, using anti-HDHD1 antibody (AP93866), (Red), compared to a nonspecific negative control antibody, (Blue).



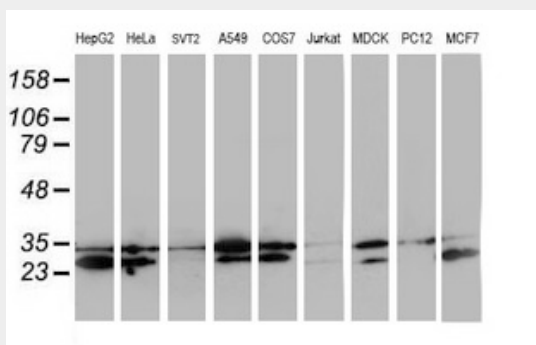
Immunohistochemical staining of paraffin-embedded Carcinoma of Human liver tissue using anti-HDHD1 mouse monoclonal antibody. (Heat-induced epitope retrieval by 10mM citric buffer, pH6.0, 100°C for 10min, AP93866)



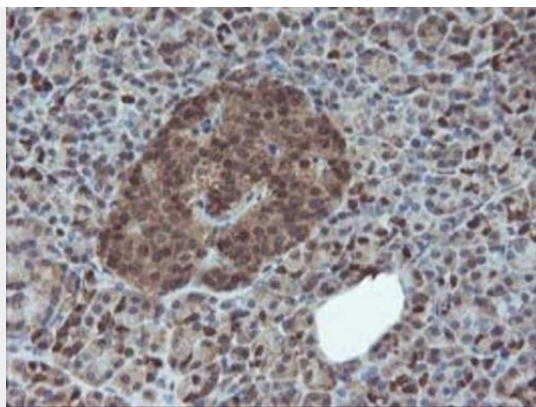
Immunohistochemical staining of paraffin-embedded Human prostate tissue within the normal limits using anti-HDHD1 mouse monoclonal antibody. (Heat-induced epitope retrieval by 10mM citric buffer, pH6.0, 100°C for 10min, AP93866)



Immunohistochemical staining of paraffin-embedded Adenocarcinoma of Human endometrium tissue using anti-HDHD1 mouse monoclonal antibody. (Heat-induced epitope retrieval by 10mM citric buffer, pH6.0, 100°C for 10min, AP93866)



Western blot analysis of extracts (35ug) from 9 different cell lines by using anti-HDHD1 monoclonal antibody.



Immunohistochemical staining of paraffin-embedded Human pancreas tissue within the normal limits using anti-HDHD1 mouse monoclonal antibody. (Heat-induced epitope retrieval by 10mM citric buffer, pH6.0, 100°C for 10min, AP93866)

#### **HDHD1 (5Z16) Mouse Monoclonal antibody - Background**

This gene encodes a member of the haloacid dehalogenase-like (HAD) hydrolase superfamily. The encoded protein has no known biological function. This gene has a pseudogene on chromosome 1. Multiple alternatively spliced transcript variants encoding different isoforms have been identified. [provided by RefSeq]