

CSPP1 Antibody (N-term)
Affinity Purified Rabbit Polyclonal Antibody (Pab)
Catalog # AP9386a

Specification

CSPP1 Antibody (N-term) - Product Information

Application	FC, IHC-P, WB,E
Primary Accession	Q1MSJ5
Reactivity	Human
Host	Rabbit
Clonality	Polyclonal
Isotype	Rabbit IgG
Calculated MW	145522
Antigen Region	304-333

CSPP1 Antibody (N-term) - Additional Information

Gene ID 79848

Other Names

Centrosome and spindle pole-associated protein 1, CSPP1, CSPP

Target/Specificity

This CSPP1 antibody is generated from rabbits immunized with a KLH conjugated synthetic peptide between 304-333 amino acids from the N-terminal region of human CSPP1.

Dilution

FC~~1:10~50

IHC-P~~1:50~100

WB~~1:1000

E~~Use at an assay dependent concentration.

Format

Purified polyclonal antibody supplied in PBS with 0.09% (W/V) sodium azide. This antibody is purified through a protein A column, followed by peptide affinity purification.

Storage

Maintain refrigerated at 2-8°C for up to 2 weeks. For long term storage store at -20°C in small aliquots to prevent freeze-thaw cycles.

Precautions

CSPP1 Antibody (N-term) is for research use only and not for use in diagnostic or therapeutic procedures.

CSPP1 Antibody (N-term) - Protein Information

Name CSPP1

Synonyms CSPP

Function May play a role in cell-cycle-dependent microtubule organization.

Cellular Location

Cytoplasm, cytoskeleton, microtubule organizing center, centrosome. Cytoplasm, cytoskeleton, spindle. Cytoplasm, cytoskeleton, spindle pole. Cell projection, cilium. Note=Associated with mitotic spindles.

Tissue Location

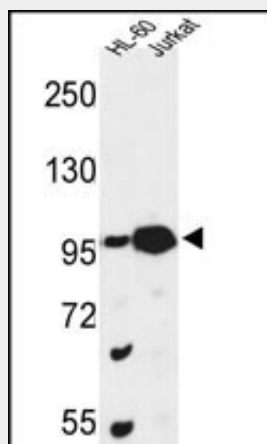
Expressed in adult and fetal brain with enrichment in the cerebellum. Detected in testis.

CSPP1 Antibody (N-term) - Protocols

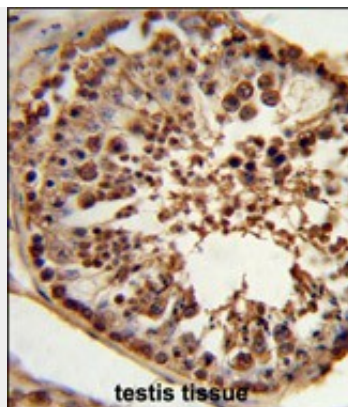
Provided below are standard protocols that you may find useful for product applications.

- [Western Blot](#)
- [Blocking Peptides](#)
- [Dot Blot](#)
- [Immunohistochemistry](#)
- [Immunofluorescence](#)
- [Immunoprecipitation](#)
- [Flow Cytometry](#)
- [Cell Culture](#)

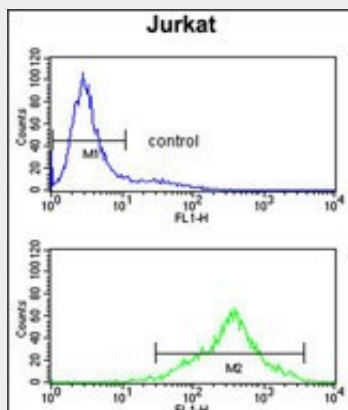
CSPP1 Antibody (N-term) - Images



Western blot analysis of CSPP1 Antibody (N-term) (Cat. #AP9386a) in HL-60, Jurkat cell line lysates (35ug/lane). CSPP1 (arrow) was detected using the purified Pab.



Formalin-fixed and paraffin-embedded human testis tissue reacted with CSPP1 Antibody (N-term), which was peroxidase-conjugated to the secondary antibody, followed by DAB staining. This data demonstrates the use of this antibody for immunohistochemistry; clinical relevance has not been evaluated.



CSPP1 Antibody (N-term) (Cat. #AP9386a) flow cytometry analysis of Jurkat cells (bottom histogram) compared to a negative control cell (top histogram). FITC-conjugated goat-anti-rabbit secondary antibodies were used for the analysis.

CSPP1 Antibody (N-term) - Background

CSPP1 interacts with centrosomes and microtubules and plays a role in cell-cycle progression and spindle organization.

CSPP1 Antibody (N-term) - References

Asiedu, M., et al. Mol. Biol. Cell 20(5):1428-1440(2009) Patzke, S., et al. J. Cell. Physiol. 209(1):199-210(2006) Patzke, S., et al. Oncogene 24(7):1159-1173(2005)